

DEPARTMENT OF THE ARMY TECHNICAL MANUAL

ORGANIZATIONAL MAINTENANCE REPAIR PARTS AND  
SPECIAL TOOLS LIST FOR  
TEST SET NAVIGATIONAL COMPUTER-CONTROL INDICATOR AN/ASM-386

Headquarters, Department of the Army, Washington, D.C.

**24 September 1971**

TABLE OF CONTENTS

	Paragraph	Page
SECTION I. INTRODUCTION		
Scope . . . . .	1-1	1-1
General . . . . .	1-2	1-1
Explanation of Columns. . . . .	1-3	1-1
Special Information . . . . .	1-4	1-3
How to Locate Repair Parts . . . . .	1-5	1-3
Abbreviations (Not Applicable) : . . * ' ' . . . . . <sup>e</sup> ' . . . . .	<b>1-6</b>	1-4
Federal Supply Codes for Manufacturers . . . . .	<b>1-7</b>	1-4
Recommendations for Maintenance Publication Improvements . . . . .	<b>1-8</b>	1-4
SECTION II. PRESCRIBED LOAD ALLOWANCE . . . . .		2-1
SECTION III. REPAIR PARTS FOR ORGANIZATIONAL MAINTENANCE. . . . .		3-1
SECTION IV. SPECIAL TOOLS, TEST AND SUPPORT EQUIPMENT FOR ORGANIZATIONAL MAINTENANCE (Not Applicable) . . . . .		4-1
SECTION V. INDICES		
Federal Stock Number Cross Reference to Index Number . . . . .		5-1
Reference Number Cross-Reference to Figure and Item Number . . . . .		5-3
Reference Designation Cross Reference to Index Number . . . . .		5-5
Federal Stock Number Cross-Reference to Figure and Item Number. . . . .		5-7
Figure and Item Number Cross Reference to Index Number . . . . .		5-9

LIST OF ILLUSTRATIONS

Number	Title	Page
1.	Test Set, Navigational Computer-Control Indicator AN/ASM-386 . . . . .	<b>3-12</b>
2.	<b>Accessory</b> Case CY-6757/ASM-386. . . . .	3-13
3.	Logic Control Unit TS-2912/ASM-386 . . . ' ~ : . . . : - : * : * : . . . * * ' . * . <sup>a</sup> . . . s * : . . . . .	3-14
4.	Signal Conditioning Unit TS-2913/ASM-386. . * . . . . .	3-15

ORGANIZATIONAL MAINTENANCE REPAIR PARTS AND SPECIAL TOOLS LIST

Section I. INTRODUCTION

1-1. Scope.

This manual lists repair parts and special tools required for the performance of organizational maintenance of the Test Set, Navigational Computer-Control Indicator AN/ASM-386.

1-2. General.

This Repair Parts and Special Tools List is divided into the following sections:

a. Prescribed Load Allowance (PLA) - Section II. A composite listing of the repair parts, special tools, test and support equipment having quantitative allowances for initial stockage at the organizational level.

b. Repair Parts - Section III. A list of repair parts authorized *for* the performance of maintenance at the organizational level in index number sequence.

c. Special Tools, Test and Support Equipment - Section IV. Not applicable.

d. Indices -Section V. Conversion of numbers and indices is explained as follows:

(1) Index - Federal Stock Number Cross Reference to Index Number. A list of Federal stock numbers, in ascending numerical sequence, cross-referenced to the Repair Parts list index number.

(2) **Index** - Reference Number Cross-Reference to Figure and Item Number. A list of reference numbers (part numbers and manufacturers codes). in ascending alphanumeric sequence, cross-referenced to figure and item number.

(3) Index - Reference Designation Cross Reference to Index Number. A list of Reference Designations (RD), in ascending alphanumeric sequence, cross-referenced to the Repair Parts list index number.

(4) Index - Federal Stock Number Cross-Reference to Figure and Item Number. A list of Federal stock numbers, in ascending numerical sequence. cross-referenced to the illustration figure number and item number.

(5) Index - Figure and Item Number Cross Reference to Index Number. A list of figure and item numbers, each in ascending numerical sequence, cross-referenced to the Repair Parts list index numbers.

1-3. Explanation of Columns.

The following provides an explanation of columns in the tabular lists in Sections III and IV.

a. Source Code, Maintenance, and Recoverability (SMR) Codes, Column 1.

(1) Source code, indicates the selection status and source for the listed item Source codes are:

Code	Explanation
A	Applies to assemblies which are not procured or stocked as such but are made up of two or more units, each of which carry individual stock numbers and descriptions and are procured and stocked and can be assembled by units at indicated maintenance categories
AH	Applies to repair parts requiring assembly at a category higher than that authorized to replace the part
G	Applies to major assemblies that are procured with Procurement of Electronic and Missile, Army (PEMA) funds for initial issue only to be used as exchange assemblies at Direct Support Unit (DSU) and General Support Unit (GSU) level. These assemblies will not be stocked above DSU and GSU level of returned to depot level

TM 11-6625-2441-20P

P Applies to repair parts which are stocked in or supplied from General Support Activity Direct Support Activity (GSA/DSA), or Army supply system, and authorized for use at indicated maintenance categories

(2) Maintenance code, indicates the lowest category of maintenance authorized to install the listed item. The maintenance level is:

Code	Explanation
0	Organizational Maintenance

(3) Recoverability code. indicates whether unserviceable items should be returned for recovery or salvage. Items not coded are expendable. Recoverability codes are-

Code	Explanation
R	Applies to repair parts and assemblies which are economically repairable at DSU and GSU activities and normally are furnished by supply on an exchange basis
S	Applies to repair parts and assemblies which are economically repairable at DSU and GSU activities and which normally are furnished by supply on an exchange basis. When items are determined by a GSU to be uneconomically repairable, they will be evacuated to a depot for evaluation and analysis before final disposition
T	Applies to high dollar value recoverable repair parts which are <b>subject</b> to special handling and are issued on an exchange basis. Such repair parts normally are repaired or overhauled at depot maintenance

b. The second line of column 1 is a cross-reference to the index number of the repair part as it appears in the Selection Work Sheet

c. Federal Stock Number, Column 2. This column indicates the Federal stock number assigned to the item and will be used for requisitioning purposes.

d. Description, Column 3. This column indicates the Federal item name of the item required. A part number or other reference number is followed by the applicable five-digit Federal supply code for manufacturers.

e. Unit of Measure (U/M), Column 4. A two-character alphabetic abbreviation indicating the amount or quantity of the item upon which the allowances are based, e.g., EA (each).

f. Quantity Incorporated in Unit, Column 5. This column indicates the quantity of the item used in any one assembly. An "AR" appearing in this column in lieu of a quantity indicates that a definite quantity cannot be indicated. e.g., shims, spacers, etc

g. 15-Day Organizational Maintenance Allowance, Column 3 of Section II and Column 6 of Section III and IV.

(1) The allowance columns are divided into four subcolumns. Indicated in each subcolumn opposite the first appearance of each item is the total quantity of items authorized for the number of equipments supported. Subsequent appearances of the same item will have the letters "REF" in the allowance columns. Items authorized for use as required but not for initial stockage are Identified with an asterisk in the allowance column.

(2) The quantitative allowances for organizational level of maintenance represents one initial prescribed load for a 15-day period for the number of equipments supported. Units and organizations authorized additional prescribed loads will multiply the number of prescribed loads authorized by the quantity of repair Parts reflected in the density column applicable to the number of items supported to obtain the total quantity of repair parts authorized.

(3) Organizational units providing maintenance for more than 1% of these equipments shall determine the total quantity of Parts required by converting the equipment quantity to a decimal factor by placing a decimal Point before the next to last digit of the number to indicate hundredths. and multiplying the decimal factor by the Parts quantity authorized in the 51-100 allowance column. Example, authorized allowance for 51-100 equipments is 40, for 150 equipments multiply 40 by 1.50 or 60 parts required.

(4) Subsequent changes to allowances will be limited as follows: No change in the range of items is authorized. If additional items are considered necessary, recommendation should be forwarded to Commanding Officer, U.S. Army Electronics Command, ATTN: AMSEL-ME-NMP-AS, Fort Monmouth, New Jersey 07703 for exception or revision to the allowance list. Revisions to the range of items authorized will be made by the Commanding Officer, U. S. Army Electronics Command, ATTN: AMSEL-ME-NMP-AS, Fort Monmouth, New Jersey 07703 based upon engineering experience, demand data, or TAERS information.

h. Illustration, Column 7. This column indicates the figure number of the illustration in which the item is shown, and the number used to reference the item in the illustration.

i. Reference Designation, Column 8. This column indicates the reference designation symbol of each item in the equipment.

1-4. Special Information.

a. Repair parts mortality has been based on 100 equipments operating 65 hours a month for 1 year.

b. The basis of issue for authorized special tools, test and support equipment is the number of end items of equipment supported and the number of maintenance personnel allocated to perform the required maintenance operations as follows: Two sets of Special Tools and Test Equipment supporting twenty-three AN/ASN-86 Inertial Navigation Sets.

c. The following publications pertain to Test Set, Navigational Computer-Control Indicator AN/ASM-386 and its components.

TM 11-6625-2441-12	Operator's and Organizational Maintenance Manual for Test Set, Navigational Computer-Control Indicator AN/ASM-386
TM 11-6625-2441-45	General Support and Depot Maintenance Manual for Test Set, Navigational Computer-Control Indicator AN/ASM-386
TM 11-6625-2441-45P	General Support and Depot Maintenance Repair Parts and Special Tools List Manual for Test Set, Navigational Computer-Control Indicator AN/ASM-386

1-5. How to Locate Repair Parts.

a. When the Federal stock number or reference number is unknown:

(1) First. Using the List of Illustrations, determine the assembly within which the repair part belongs..

(2) Second. Find the illustration covering the assembly to which the repair part belongs.

(3) Third. Identify the repair part on the illustration and note the figure and item number of the repair part.

(4) Fourth. Using the Figure and Item Number Cross Reference to Index Number index. locate the sequence index number of the repair part.

(5) Fifth. Refer to the index number in the Repair Parts list for the Federal stock number or reference number.

b. When the Federal stock number or reference number is known

(1) First. Using either of the indices of Federal Stock Numbers. find the Federal stock number. These indices are in ascending numerical sequence by Federal stock number, cross-referenced to either the Repair Parts list index number or to the illustration figure and item number.

(2) Second. Using the Reference Number Cross-Reference to Index Number index, find the applicable index number. This index is in ascending alphanumeric sequence by reference number cross-referenced to the Repair Parts list index number

(3) Third. Using the Repair Parts list, find the assembly of the repair part and the illustration figure and item number, or the index number, as referenced in the indices of Federal Stock Numbers or Reference Numbers.

c When the RD is known.

(1) First. Using the Reference Designation Cross Reference to Index Number index, find the index number. The next higher assembly of any component may be determined by using the RD Index. Identify the RD of the part in question and, by following the upward progression of this index, the sequence number of the next higher assembly part number may be identified. The RD is compiled as follows:

<u>1</u>	<u>AI</u>	<u>AI</u>	<u>MP1</u>
Unit No.	Assembly Letter and No.	Subassembly Letter and No.	Component Letter and No.

(2) Second. Using the Repair Parts list, find the assembly of the repair part and the illustration figure and item number.

d. When the Figure and Item Number are known

(1) First. Using the Figure and Item Number Cross Reference to Index Number index, locate the sequence index number of the repair part

(2) Second. Refer to the index number in the Repair Parts list for the Federal stock number or reference number.

1-6. Abbreviations. Not applicable.

1-7. Federal Supply Codes for Manufacturers.

Code	Manufacturer
06481	Litton Systems, Inc. Guidance and Control Systems Div. 5500 Canoga Ave. Woodland Hills, Calif 91364
71744	Chicago Miniature Lamp Works 4433 Ravenswood Ave Chicago, Ill. 60640
81349	Military Specifications Promulgated by Standardization Div. Directorate of Logistic Services, DSA
87034	Marco&Oak Industries A Division of Oak Electro/Netics Corp 207 S. Helena P.O Box 4011 Anaheim, Calif 92803
96906	Military Standards Promulgated by Standardization Div Directorate of Logistics Services, DSA

1-8. Recommendations for Maintenance Publication Improvements

Report of errors, omissions, and recommendations for improving this publication by the individual user is encouraged. Reports should be submitted on DA Form 2028 (Recommended Changes to DA Publications) and forwarded direct to Commanding Officer, U. S. Army Electronics Command, Attn: AMSEL-ME-NMP-AS, Fort Monmouth, New Jersey 07703

SECTION II. PRESCRIBED LOAD ALLOWANCE

(1) FEDERAL STOCK NUMBER	(2) DESCRIPTION	USABLE ON CODE	(3) 15-DAY ORGANIZATIONAL MAINTENANCE ALLOWANCE			
			(a)	(b)	(c)	(d)
			1-5	6-20	21-50	51-100
INDEX NUMBERS ARE INCLUDED TO FACILITATE CROSS-REFERENCING						
5355-751-7597	KNOB, CONTROL /INDEX NUMBER F452M/					1
5355-839-9448	KNOB, CONTROL /INDEX NUMBER D131M/					1
5355-917-1012	KNOB, CONTROL /INDEX NUMBER D073/					2
5930-997-7974	BOOT, DUST AND MOISTURE SEAL /INDEX NUMBER D121M/					2
6210	LENS, INDICATOR LIGHT /INDEX NUMBER D148A/			2		2
6210	LENS, INDICATOR LIGHT /INDEX NUMBER F467/			2		2
6625	CIRCUIT CARD ASSEMBLY /INDEX NUMBER A879A/					1
6625	CIRCUIT CARD ASSEMBLY /INDEX NUMBER A919A/					2
6625	CIRCUIT CARD ASSEMBLY /INDEX NUMBER A967A/			2		2
6625	CIRCUIT CARD ASSEMBLY /INDEX NUMBER B066M/			2		2
6625	CIRCUIT CARD ASSEMBLY /INDEX NUMBER B150M/			2		2
6625	CIRCUIT CARD ASSEMBLY /INDEX NUMBER B429M/			2		2
6625	CIRCUIT CARD ASSEMBLY /INDEX NUMBER B723M/			2		2
6625	CIRCUIT CARD ASSEMBLY /INDEX NUMBER B947M/			2		2
6625	CIRCUIT CARD ASSEMBLY /INDEX NUMBER C004M/			2		2
6625	CIRCUIT CARD ASSEMBLY /INDEX NUMBER C159M/			2		2
6625	CIRCUIT CARD ASSEMBLY /INDEX NUMBER C264M/			2		2
6625	CIRCUIT CARD ASSEMBLY /INDEX NUMBER C633M/					1
6625	CIRCUIT CARD ASSEMBLY /INDEX NUMBER C669M/					1
6625	CIRCUIT CARD ASSEMBLY /INDEX NUMBER C692M/					1
6625	CIRCUIT CARD ASSEMBLY /INDEX NUMBER C707M/					1
6625	CIRCUIT CARD ASSEMBLY /INDEX NUMBER E048M/					1
6625	CIRCUIT CARD ASSEMBLY /INDEX NUMBER E066M/					1
6625	CIRCUIT CARD ASSEMBLY /INDEX NUMBER E086M/					1
6625	CIRCUIT CARD ASSEMBLY /INDEX NUMBER F067M/					1
6625	CIRCUIT CARD ASSEMBLY /INDEX NUMBER F106M/					1
6625	CIRCUIT CARD ASSEMBLY /INDEX NUMBER F176M/					1
6240-132-4011	LAMP, INCANDESCENT /INDEX NUMBER D132M/		2	6	16	29

SECTION III. REPAIR PARTS FOR ORGANIZATIONAL MAINTENANCE

(1) SMR CODE INDEX NO.	(2) FEDERAL STOCK NUMBER	(3) DESCRIPTION REFERENCE NUMBER & MFR CODE	(4) UNIT OF MEAS.	(5) QTY INC IN UNIT	(6) 15-DAY ORGANIZATIONAL MAINTENANCE ALW				(7) ILLUSTRATIONS FIGURE & ITEM NO	(8) REFERENCE DESIGNATION
					(a) 15	(b) 0-20	(c) 21-50	(d) 51-100		
G O S A001	6625-404-3280	TEST SET, NAVIGATIONAL COMPUTER-CONTROL INDICATOR AN/ASM-386 237110 (06481)	EA	1					1 - 1	
A O R A002	6625-234-6116	ACCESSORY CASE CY-6757/ASM-386 245150 (06481)	EA	1					1 - 2	3
AH O S A146M	6625-234-6115	CABLE ASSEMBLY, SPECIAL PURPOSE, ELECTRICAL CX-12127/U 244941 (06481)	EA	1					2 - 2	3W4
AH O S A163M	6625-245-1746	CABLE ASSEMBLY, SPECIAL PURPOSE, ELECTRICAL CX-12128/U 245151 (06481)	EA	1					2 - 6	3W19
AH O S A179M	6625-245-8475	CABLE ASSEMBLY, SPECIAL PURPOSE, ELECTRICAL CX-12131/U 245154 (06481)	EA	1					2 - 3	3W21
AH C S A194M	6625-245-1750	CABLE ASSEMBLY, SPECIAL PURPOSE, ELECTRICAL CX-12132/U 245158 (06481)	EA	1					2 - 4	3W8
AH O S A209M	6615-245-8476	CABLE ASSEMBLY, SPECIAL PURPOSE, ELECTRICAL CX-12133/U 245159 (06481)	EA	1					2 - 7	3W9
AH O S A225M	6625-245-8477	CABLE ASSEMBLY, SPECIAL PURPOSE, ELECTRICAL CX-12134/U 245160 (06481)	EA	1					2 - 8	3W10
AH O S A241M	6625-411-5837	CABLE ASSEMBLY, SPECIAL PURPOSE, ELECTRICAL CX-12136/U 245162 (06481)	EA	1					2 - 10	3W12
AH O S A259M	6625-245-8473	CABLE ASSEMBLY, SPECIAL PURPOSE, ELECTRICAL CX-12137/U 245163 (06481)	EA	1					2 - 11	3W13
AH O S A277M	6625-245-8474	CABLE ASSEMBLY, SPECIAL PURPOSE, ELECTRICAL CX-12138/U 245164 (06481)	EA	1					2 - 5	3W14
AH O S A293M	6625-245-1747	CABLE ASSEMBLY, SPECIAL PURPOSE, ELECTRICAL CX-12135/U 245161 (06481)	EA	1					2 - 9	3W11
AH O S A309A	6625-410-9913	CABLE ASSEMBLY, SPECIAL PURPOSE, ELECTRICAL CX-12140/U 245160 (06481)	EA	1					2 - 1	3W16
G O S A402M	6625-234-6147	LOGIC CONTROL UNIT TS-2912/ASM-386 245200 (06481)	EA	1					1 - 3	1
AH O S A403M	6625-245-1738	CABLE ASSEMBLY, SPECIAL PURPOSE, ELECTRICAL CX-12129/U 245152 (06481)	EA	1					3 - 1	1W20
AH C S A418M	6625-410-9912	CABLE ASSEMBLY, SPECIAL PURPOSE, ELECTRICAL CX-12139/U 245165 (06481)	EA	1					3 - 2	1W15
AH O S A448M	6625-245-1748	CABLE ASSEMBLY, SPECIAL PURPOSE, ELECTRICAL CX-12141/U 245167 (06481)	EA	1					3 - 3	1W17
AH O R A463M	6625-245-1751	CABLE ASSEMBLY, SPECIAL PURPOSE, ELECTRICAL CX-12142/U 245168 (06481)	EA	1					3 - 4	1W18
A O S A494M	6625	LOGIC CONTROL UNIT SUBASSEMBLY 245216 (06481)	EA	1					3 - 5	1A1
P O T A879A	6625	CIRCUIT CARD ASSEMBLY 245139 (06481)	EA	1	*	*	*	1	3 - 53	1A1A1A27

SECTION III REPAIR PARTS FOR ORGANIZATIONAL MAINTENANCE (CONTINUED)

(1) SMR CODE INDEX NO	(2) FEDERAL STOCK NUMBER	(3) DESCRIPTION REFERENCE NUMBER & MFR CODE	(4) UNIT OF MEAS USABLE ON CODE	(5) QTY INC IN UNIT	(6) 15 DAY ORGANIZATIONAL MAINTENANCE ALW				(7) ILLUSTRATIONS FIGURE & ITEM NO	(8) REFERENCE DESIGNATION
					(a) 15	(b) 620	(c) 2150	(d) 51100		
P O I 4829A	6625	CIRCUIT CARD ASSEMBLY 245139 (06481)	EA	1	REF	REF	REF	REF	3 - 136	1A1A4A22
P O I 4899A	6625	CIRCUIT CARD ASSEMBLY 245139 (06481)	EA	1	REF	REF	REF	REF	3 - 137	1A1A4A23
P C T 4909A	6625	CIRCUIT CARD ASSEMBLY 245139 (06481)	EA	1	REF	REF	REF	REF	3 - 138	1A1A4A24
P O I A919A	6625	CIRCUIT CARD ASSEMBLY 245142 (06481)	EA	1	*	*	*	2	3 - 91	1A1A2A6
P O I -929A	6625	CIRCUIT CARD ASSEMBLY 245142 (06481)	EA	1	REF	REF	REF	REF	3 - 111	1A1A2A6
P C I A939A	6625	CIRCUIT CARD ASSEMBLY 245142 (06481)	EA	1	REF	REF	REF	REF	3 - 54	1A1A1A2E
P C I A953A	6625	CIRCUIT CARD ASSEMBLY 245142 (06481)	EA	1	REF	REF	REF	REF	3 - 86	1A1A2A1
P C T A966A	6625	CIRCUIT CARD ASSEMBLY 245142 (06481)	EA	1	REF	REF	REF	REF	3 - 93	1A1A2A5
P O T A967M	6625	CIRCUIT CARD ASSEMBLY 245203-1 (06481)	EA	1	*	*	2	2	3 - 92	1A1A2A7
P O T A981M	6625	CIRCUIT CARD ASSEMBLY 245203-1 (06481)	EA	1	REF	REF	REF	REF	3 - 93	1A1A2A8
P O T A995M	6625	CIRCUIT CARD ASSEMBLY 245203-1 (06481)	EA	1	REF	REF	REF	REF	3 - 94	1A1A2A9
P O I F010M	6625	CIRCUIT CARD ASSEMBLY 245203-1 (06481)	EA	1	REF	REF	REF	REF	3 - 98	1A1A2A13
P C T E024M	6625	CIRCUIT CARD ASSEMBLY 245203-1 (06481)	EA	1	REF	REF	REF	REF	3 - 128	1A1A4A13
P O T B031M	6625	CIRCUIT CARD ASSEMBLY 245203-1 (06481)	EA	1	REF	REF	REF	REF	3 - 129	1A1A4A14
P O I B072M	6625	CIRCUIT CARD ASSEMBLY 245203-1 (06481)	EA	1	REF	REF	REF	REF	3 - 130	1A1A4A15
P O T E025A	6625	CIRCUIT CARD ASSEMBLY 245142 (06481)	EA	1	REF	REF	REF	REF	3 - 87	1A1A2A2
P C T B066M	6625	CIRCUIT CARD ASSEMBLY 245203-2 (06481)	EA	1	*	*	2	2	3 - 28	1A1A1A2
P C T E080M	6625	CIRCUIT CARD ASSEMBLY 245203-2 (06481)	EA	1	REF	REF	REF	REF	3 - 37	1A1A1A11
P O T B094M	6625	CIRCUIT CARD ASSEMBLY 245203-2 (06481)	EA	1	REF	REF	REF	REF	3 - 98	1A1A2A3
P O T B108M	6625	CIRCUIT CARD ASSEMBLY 245203-2 (06481)	EA	1	REF	REF	REF	REF	3 - 79	1A1A3A24
P O T E122M	6625	CIRCUIT CARD ASSEMBLY 245203-2 (06481)	EA	1	REF	REF	REF	REF	3 - 80	1A1A3A25
P C T E136M	6625	CIRCUIT CARD ASSEMBLY 245203-2 (06481)	EA	1	REF	REF	REF	REF	3 - 135	1A1A4A20
P C T E157M	6625	CIRCUIT CARD ASSEMBLY 245203-3 (06481)	EA	1	*	*	2	2	3 - 27	1A1A1A1
P O T B164M	6625	CIRCUIT CARD ASSEMBLY 245203-3 (06481)	EA	1	REF	REF	REF	REF	3 - 30	1A1A1A4
P O T B178M	6625	CIRCUIT CARD ASSEMBLY 245203-3 (06481)	EA	1	REF	REF	REF	REF	3 - 44	1A1A1A1P



SECTION III. REPAIR PARTS FOR ORGANIZATIONAL MAINTENANCE (CONTINUED)

(1) SMR CODE	(2) FEDERAL STOCK NUMBER	(3) DESCRIPTION	(4) UNIT OF MEAS	(5) QTY INC IN UNIT	(6) 15 DAY ORGANIZATIONAL MAINTENANCE ALW				(7) ILLUSTRATIONS FIGURE & ITEM NO	(8) REFERENCE DESIGNATION
					(a) 15	(b) 6 20	(c) 21 50	(d) 51 100		
INDEX NO		REFERENCE NUMBER & MFR CODE	USABLE ON CODE							
P O T 8192M	6625	CIRCUIT CARD ASSEMBLY 245203-3 (06481)		EA 1	REF	REF	REF	REF	3 - 47	1A1A1A21
P O T 8206M	6625	CIRCUIT CARD ASSEMBLY 245203-3 (06481)		EA 1	REF	REF	REF	REF	3 - 49	1A1A1A23
P O T 8220M	6625	CIRCUIT CARD ASSEMBLY 245203-3 (06481)		EA 1	REF	REF	REF	REF	3 - 51	1A1A1A25
P O T 8234M	6625	CIRCUIT CARD ASSEMBLY 245203-3 (06481)		EA 1	REF	REF	REF	REF	3 - 89	1A1A2A4
P C T 8248M	6625	CIRCUIT CARD ASSEMBLY 245203-3 (06481)		EA 1	REF	REF	REF	REF	3 - 93	1A1A2A14
P O T 8262M	6625	CIRCUIT CARD ASSEMBLY 245203-3 (06481)		EA 1	REF	REF	REF	REF	3 - 101	1A1A2A16
P O T 8276M	6625	CIRCUIT CARD ASSEMBLY 245203-3 (06481)		EA 1	REF	REF	REF	REF	3 - 102	1A1A2A17
P O T 8290M	6625	CIRCUIT CARD ASSEMBLY 245203-3 (06481)		EA 1	REF	REF	REF	REF	3 - 103	1A1A2A18
P O T 8304M	6625	CIRCUIT CARD ASSEMBLY 245203-3 (06481)		EA 1	REF	REF	REF	REF	3 - 104	1A1A2A19
P C T 8318M	6625	CIRCUIT CARD ASSEMBLY 245203-3 (06481)		EA 1	REF	REF	REF	REF	3 - 109	1A1A2A24
P C T 8332M	6625	CIRCUIT CARD ASSEMBLY 245203-3 (06481)		EA 1	REF	REF	REF	REF	3 - 59	1A1A3A3
P O T 8346M	6625	CIRCUIT CARD ASSEMBLY 245203-3 (06481)		EA 1	REF	REF	REF	REF	3 - 61	1A1A3A5
P O T 8359M	6625	CIRCUIT CARD ASSEMBLY 245203-3 (06481)		EA 1	REF	REF	REF	REF	3 - 63	1A1A3A7
P O T 8373M	6625	CIRCUIT CARD ASSEMBLY 245203-3 (06481)		EA 1	REF	REF	REF	REF	3 - 64	1A1A3A8
P O T 8387M	6625	CIRCUIT CARD ASSEMBLY 245203-3 (06481)		EA 1	REF	REF	REF	REF	3 - 77	1A1A3A22
P C T 8401M	6625	CIRCUIT CARD ASSEMBLY 245203-3 (06481)		EA 1	REF	REF	REF	REF	3 - 132	1A1A417
P O T 8415M	6625	CIRCUIT CARD ASSEMBLY 245203-3 (06481)		EA 1	REF	REF	REF	REF	3 - 134	1A1A419
P O T 8429M	6625	CIRCUIT CARD ASSEMBLY 245203-4 (06481)		EA 1	*	*	2	2	3 - 32	1A1A1A6
P O T 8443M	6625	CIRCUIT CARD ASSEMBLY 245203-4 (06481)		EA 1	REF	REF	REF	REF	3 - 35	1A1A1A9
P O T 8457M	6625	CIRCUIT CARD ASSEMBLY 245203-4 (06481)		EA 1	REF	REF	REF	REF	3 - 40	1A1A1A14
P C T 8471M	6625	CIRCUIT CARD ASSEMBLY 245203-4 (06481)		EA 1	REF	REF	REF	REF	3 - 43	1A1A1A17
P O T 8485M	6625	CIRCUIT CARD ASSEMBLY 245203-4 (06481)		EA 1	REF	REF	REF	REF	3 - 45	1A1A1A19
P O T 8499M	6625	CIRCUIT CARD ASSEMBLY 245203-4 (06481)		EA 1	REF	REF	REF	REF	3 - 46	1A1A1A20
P O T 8513M	6625	CIRCUIT CARD ASSEMBLY 245203-4 (06481)		EA 1	REF	REF	REF	REF	3 - 48	1A1A1A22
P O T 8527M	6625	CIRCUIT CARD ASSEMBLY 245203-4 (06481)		EA 1	REF	REF	REF	REF	3 - 97	1A1A2A12

SECTION III. REPAIR PARTS FOR ORGANIZATIONAL MAINTENANCE (CONTINUED)

(1) SNR CODE	(2) FEDERAL STOCK NUMBER	(3) DESCRIPTION  REFERENCE NUMBER & MFR. CODE	(4) UNIT OF MEAS.	(5) QTY INC IN UNIT	(6) 15-DAY ORGANIZATIONAL MAINTENANCE ALLOW				(7) ILLUSTRATIONS FIGURE & ITEM NO	(8) REFERENC DESIGNATI
					(a) 1-5	(b) 6-20	(c) 21-60	(d) 61-100		
P O T 8541M	6625	CIRCUIT CARD ASSEMBLY 245203-4 (06481)	EA	1	REF	REF	REF	REF	3 - 100	1A1A2A15
P O T 8555M	6625	CIRCUIT CARD ASSEMBLY 245203-4 (06481)	EA	1	REF	REF	REF	REF	3 - 100	1A1A2A25
P O T 8569M	6625	CIRCUIT CARD ASSEMBLY 245203-4 (06481)	EA	1	REF	REF	REF	REF	3 - 58	1A1A3A2
P O T 8583M	6625	CIRCUIT CARD ASSEMBLY 245203-4 (06481)	EA	1	REF	REF	REF	REF	3 - 66	1A1A3A10
P O T 8597M	6625	CIRCUIT CARD ASSEMBLY 245203-4 (06481)	EA	1	REF	REF	REF	REF	3 - 67	1A1A3A11
P O T 8611M	6625	CIRCUIT CARD ASSEMBLY 245203-4 (06481)	EA	1	REF	REF	REF	REF	3 - 107	1A1A2A22
P O T 8625M	6625	CIRCUIT CARD ASSEMBLY 245203-4 (06481)	EA	1	REF	REF	REF	REF	3 - 71	1A1A3A16
P O T 8639M	6625	CIRCUIT CARD ASSEMBLY 245203-4 (06481)	EA	1	REF	REF	REF	REF	3 - 74	1A1A3A19
P O T 8653M	6625	CIRCUIT CARD ASSEMBLY 245203-4 (06481)	EA	1	REF	REF	REF	REF	3 - 76	1A1A3A21
P O T 8667M	6625	CIRCUIT CARD ASSEMBLY 245203-4 (06481)	EA	1	REF	REF	REF	REF	3 - 121	1A1A4A6
P O T 8681M	6625	CIRCUIT CARD ASSEMBLY 245203-4 (06481)	EA	1	REF	REF	REF	REF	3 - 127	1A1A4A12
P O T 8695M	6625	CIRCUIT CARD ASSEMBLY 245203-4 (06481)	EA	1	REF	REF	REF	REF	3 - 131	1A1A4A16
P O T 8709M	6625	CIRCUIT CARD ASSEMBLY 245203-4 (06481)	EA	1	REF	REF	REF	REF	3 - 133	1A1A4A17
P O T 8723M	6625	CIRCUIT CARD ASSEMBLY 245203-5 (06481)	EA	1	*	*	2	2	3 - 68	1A1A3A12
P O T 8737M	6625	CIRCUIT CARD ASSEMBLY 245203-5 (06481)	EA	1	REF	REF	REF	REF	3 - 69	1A1A3A14
P O T 8751M	6625	CIRCUIT CARD ASSEMBLY 245203-5 (06481)	EA	1	REF	REF	REF	REF	3 - 70	1A1A3A15
P O T 8765M	6625	CIRCUIT CARD ASSEMBLY 245203-5 (06481)	EA	1	REF	REF	REF	REF	3 - 72	1A1A3A17
P O T 8779M	6625	CIRCUIT CARD ASSEMBLY 245203-5 (06481)	EA	1	REF	REF	REF	REF	3 - 73	1A1A3A13
P O T 8793M	6625	CIRCUIT CARD ASSEMBLY 245203-5 (06481)	EA	1	REF	REF	REF	REF	3 - 75	1A1A3A20
P O T 8807M	6625	CIRCUIT CARD ASSEMBLY 245203-5 (06481)	EA	1	REF	REF	REF	REF	3 - 116	1A1A4A1
P O T 8821M	6625	CIRCUIT CARD ASSEMBLY 245203-5 (06481)	EA	1	REF	REF	REF	REF	3 - 117	1A1A4A2
P O T 8835M	6625	CIRCUIT CARD ASSEMBLY 245203-5 (06481)	EA	1	REF	REF	REF	REF	3 - 118	1A1A4A3
P O T 8849M	6625	CIRCUIT CARD ASSEMBLY 245203-5 (06481)	EA	1	REF	REF	REF	REF	3 - 119	1A1A4A4
P O T 8863M	6625	CIRCUIT CARD ASSEMBLY 245203-5 (06481)	EA	1	REF	REF	REF	REF	3 - 120	1A1A4A5
P O T 8877M	6625	CIRCUIT CARD ASSEMBLY 245203-5 (06481)	EA	1	REF	REF	REF	REF	3 - 122	1A1A4A7

SECTION III. REPAIR PARTS FOR ORGANIZATIONAL MAINTENANCE (CONTINUED)

(1) SMR CODE INDEX NO	(2) FEDERAL STOCK NUMBER	(3) DESCRIPTION REFERENCE NUMBER & MFR CODE	(4) UNIT OF MEAS	(5) QTY INC IN UNIT	(6) 15-DAY ORGANIZATIONAL MAINTENANCE ALLOW				(7) ILLUSTRATIONS FIGURE & ITEM NO	(8) REFERENCE DESIGNATION
					(a) 15	(b) 6 20	(c) 21 50	(d) 51 100		
P C T 8891M	6625	CIRCUIT CARD ASSEMBLY 245203-5 (06481)	EA	1	REF	REF	REF	REF	3 - 123	1A1A4A8
P O T 8905M	6625	CIRCUIT CARD ASSEMBLY 245203-5 (06481)	EA	1	REF	REF	REF	REF	3 - 124	1A1A4A9
P U T 8919M	6625	CIRCUIT CARD ASSEMBLY 245203-5 (06481)	EA	1	REF	REF	REF	REF	3 - 125	1A1A4A10
P* C T 8933M	6625	CIRCUIT CARD ASSEMBLY 245203-5 (06481)	EA	1	REF	REF	REF	REF	3 - 126	1A1A4A11
P O T 8947M	6625	CIRCUIT CARD ASSEMBLY 245136 (06481)	EA	1	*	*	2	2	3 - 38	1A1A1A12
P C T 8961A	6625	CIRCUIT CARD ASSEMBLY 245136 (06481)	EA	1	REF	REF	REF	REF	3 - 95	1A1A2A10
P O T 8975A	6625	CIRCUIT CARD ASSEMBLY 245136 (06481)	EA	1	REF	REF	REF	REF	3 - 96	1A1A2A11
P O T 8989A	6625	CIRCUIT CARD ASSEMBLY 245136 (06481)	EA	1	REF	REF	REF	REF	3 - 105	1A1A2A20
P O T C004A	6625	CIRCUIT CARD ASSEMBLY 245209-1 (06481)	EA	1	*	*	2	2	3 - 29	1A1A1A3
P O T C017M	6625	CIRCUIT CARD ASSEMBLY 245209-1 (06481)	EA	1	REF	REF	REF	REF	3 - 31	1A1A1A5
P C T C030M	6625	CIRCUIT CARD ASSEMBLY 245209-1 (06481)	EA	1	REF	REF	REF	REF	3 - 33	1A1A1A7
P O T C043M	6625	CIRCUIT CARD ASSEMBLY 245209-1 (06481)	EA	1	REF	REF	REF	REF	3 - 34	1A1A1A8
P O T C056M	6625	CIRCUIT CARD ASSEMBLY 245209-1 (06481)	EA	1	REF	REF	REF	REF	3 - 39	1A1A1A13
P O T C069M	6625	CIRCUIT CARD ASSEMBLY 245209-1 (06481)	EA	1	REF	REF	REF	REF	3 - 41	1A1A1A15
P O T C082M	6625	CIRCUIT CARD ASSEMBLY 245209-1 (06481)	EA	1	REF	REF	REF	REF	3 - 42	1A1A1A16
P C T C095M	6625	CIRCUIT CARD ASSEMBLY 245209-1 (06481)	EA	1	REF	REF	REF	REF	3 - 50	1A1A1A24
P C T C108M	6625	CIRCUIT CARD ASSEMBLY 245209-1 (06481)	EA	1	REF	REF	REF	REF	3 - 100	1A1A2A23
P O T C121M	6625	CIRCUIT CARD ASSEMBLY 245209-1 (06481)	EA	1	REF	REF	REF	REF	3 - 57	1A1A3A1
P O T C134M	6625	CIRCUIT CARD ASSEMBLY 245209-1 (06481)	EA	1	REF	REF	REF	REF	3 - 60	1A1A3A4
P O T C147M	6625	CIRCUIT CARD ASSEMBLY 24519-1 (06481)	EA	1	REF	REF	REF	REF	3 - 62	1A1A3A6
P C T C160M	6625	CIRCUIT CARD ASSEMBLY 245209-1 (06481)	EA	1	REF	REF	REF	REF	3 - 65	1A1A3A9
P O T C173A	6625	CIRCUIT CARD ASSEMBLY 245136 (06481)	EA	1	REF	REF	REF	REF	3 - 82	1A1A3A27
P O T C186M	6625	CIRCUIT CARD ASSEMBLY 245209-1 (06481)	EA	1	REF	REF	REF	REF	3 - 78	1A1A3A23
P O T C199M	6625	CIRCUIT CARD ASSEMBLY 245209-2 (06481)	EA	1	*	*	2	2	3 - 52	1A1A1A26
P O T C212M	6625	CIRCUIT CARD ASSEMBLY 245209-2 (06481)	EA	1	REF	REF	REF	REF	3 - 81	1A1A3A26

SECTION III. REPAIR PARTS FOR ORGANIZATIONAL MAINTENANCE (CONTINUED)

(1) SMR CODE	(2) FEDERAL STOCK NUMBER	(3) DESCRIPTION	(4) UNIT OF MEAS	(5) QTY INC IN UNIT	(6) 15 DAY ORGANIZATIONAL MAINTENANCE ALW				(7) ILLUSTRATIONS FIGURE & ITEM NO	(8) REFERENCE DESIGNATION
					(a)	(b)	(c)	(d)		
					15	6 20	21 60	51 100		
P O T C225M	6625	CIRCUIT CARD ASSEMBLY 245209-2 (06481)	EA	1	REF	REF	REF	REF	3 - 106	1A1A2A21
P O T C238A	6625	CIRCUIT CARD ASSEMBLY 245136 (06481)	EA	1	REF	REF	REF	REF	3 - 83	1A1A3A28
P O T C251A	6625	CIRCUIT CARD ASSEMBLY 245136 (06481)	EA	1	REF	REF	REF	REF	3 - 36	1A1A1A10
P C T C264M	6625	CIRCUIT CARD ASSEMBLY 245220 (06481)	EA	1	*	*	2	2	3 - 56	1A1A1A30
P O T C305M	6625	CIRCUIT CARD ASSEMBLY 245220 (06481)	EA	1	REF	REF	REF	REF	3 - 113	1A1A2A28
P O T C346M	6625	CIRCUIT CARD ASSEMBLY 245220 (06481)	EA	1	REF	REF	REF	REF	3 - 85	1A1A3A30
P O T C387M	6625	CIRCUIT CARD ASSEMBLY 245220 (06481)	EA	1	REF	REF	REF	REF	3 - 139	1A1A4A25
P O T C428M	6625	CIRCUIT CARD ASSEMBLY 245220 (06481)	EA	1	REF	REF	REF	REF	3 - 140	1A1A4A26
P C T C469M	6625	CIRCUIT CARD ASSEMBLY 245220 (06481)	EA	1	REF	REF	REF	REF	3 - 141	1A1A4A27
P O T C510M	6625	CIRCUIT CARD ASSEMBLY 245220 (06481)	EA	1	REF	REF	REF	REF	3 - 142	1A1A4A28
P O T C551M	6625	CIRCUIT CARD ASSEMBLY 245220 (06481)	EA	1	REF	REF	REF	REF	3 - 143	1A1A4A29
P O T C592M	6625	CIRCUIT CARD ASSEMBLY 245220 (06481)	EA	1	REF	REF	REF	REF	3 - 144	1A1A4A30
P O T C633M	6625	CIRCUIT CARD ASSEMBLY 248214 (06481)	EA	1	*	*	*	1F	3 - 84	1A1A3A29
P C T C669M	6625	CIRCUIT CARD ASSEMBLY 248215 (06481)	EA	1	*	*	*	1F	3 - 55	1A1A1A29
P O T C692M	6625	CIRCUIT CARD ASSEMBLY 248216 (06481)	EA	1	*	*	*	1F	3 - 112	1A1A2A.7
P O T C707M	6625	CIRCUIT CARD ASSEMBLY 248217 (06481)	EA	1	*	*	*	1F	3 - 114	1A1A2A29
P O T C748M	6625	CIRCUIT CARD ASSEMBLY 248218 (06481)	EA	1	*	*	*	1F	3 - 115	1A1A2A30
A O S D063M	6625	PANEL ASSEMBLY, NUMBER 1 TEST 245270 (06481)	EA	1					3 - 25	1A1A6
P C D073	5355-917-1012	KNOB, CONTROL MS91528-1A48 (96906)	EA	3	*	*	*		3 - 26	1A1A6MP2
P G D121M	5930-997-7974	BOOT, DUST AND MOISTURE SEAL MILB5423-2 (81349)	EA	3	*	*	*	2	3 - 21	1A1A5MP2
P O D131M	5355-839-9448	KNOB, CONTROL MS91528-1B48 (96906)	EA	1	*	*	*	1	3 - 18	1A1A5MP3
P O D132M	6240-132-4011	LAMP, INCANDESCENT CM8-783 (71744)	EA	16	2	6	16	29	3 - 6	1A1A50S12
P O D133M	6240-132-4011	LAMP, INCANDESCENT CM8-783 (71744)	EA	REF	2	6	16	29	3 - 7	1A1A50S13
P C D134M	6240-132-4011	LAMP, INCANDESCENT CM8-783 (71744)	EA	REF	2	6	16	29	3 - 8	1A1A50S14
P O D135M	6240-132-4011	LAMP, INCANDESCENT CM8-783 (71744)	EA	REF	REF	REF	REF	REF	3 - 9	1A1A50S15

SECTION III. REPAIR PARTS FOR ORGANIZATIONAL MAINTENANCE (CONTINUED)

(1) SMR CODE INDEX NO	(2) FEDERAL STOCK NUMBER	(3) DESCRIPTION REFERENCE NUMBER & MFR CODE	(4) UNIT OF MEAS.	(5) QTY INC IN UNIT	(6) 15-DAY ORGANIZATIONAL MAINTENANCE ALLOW				(7) ILLUSTRATIONS FIGURE & ITEM NO	(8) REFERENCE DESIGNATION
					(a) 1-5	(b) 6-20	(c) 21-50	(d) 51-100		
P C D136M	6240-132-4011	LAMP, INCANDESCENT CMB-783 (71744)	EA	REF	REF	REF	REF	REF	3 - 10	1A1A5DS16
P O D137M	6240-132-4011	LAMP, INCANDESCENT CMB-783 (71744)	EA	REF	REF	REF	REF	REF	3 - 11	1A1A5DS17
P O D138M	6240-132-4011	LAMP, INCANDESCENT CMB-783 (71744)	EA	REF	REF	REF	REF	REF	3 - 12	1A1A5DS18
P O D139M	6240-132-4011	LAMP, INCANDESCENT CMB-783 (71744)	EA	REF	REF	REF	REF	REF	3 - 13	1A1A5DS19
P O D140M	6240-132-4011	LAMP, INCANDESCENT CMB-783 (71744)	EA	REF	REF	REF	REF	REF	3 - 14	1A1A5DS20
P O D141M	6240-132-4011	LAMP, INCANDESCENT CMB-783 (71744)	EA	REF	REF	REF	REF	REF	3 - 15	1A1A5DS21
P O D142M	6240-132-4011	LAMP, INCANDESCENT CMB-783 (71744)	EA	REF	REF	REF	REF	REF	3 - 16	1A1A5DS22
P O D143M	6240-132-4011	LAMP, INCANDESCENT CMB-783 (71744)	EA	REF	REF	REF	REF	REF	3 - 17	1A1A5DS23
P O D144M	6240-132-4011	LAMP, INCANDESCENT CMB-783 (71744)	EA	REF	REF	REF	REF	REF	3 - 19	1A1A5DS24
P O D145M	6240-132-4011	LAMP, INCANDESCENT CMB-783 (71744)	EA	REF	REF	REF	REF	REF	3 - 20	1A1A5DS25
P O D146M	6240-132-4011	LAMP, INCANDESCENT CMB-783 (71744)	EA	REF	REF	REF	REF	REF	3 - 23	1A1A5DS26
P O D147M	6240-132-4011	LAMP, INCANDESCENT CMB-783 (71744)	EA	REF	REF	REF	REF	REF	3 - 24	1A1A5DS27
P O D148A	6210	LENS, INDICATOR LIGHT 17P45 (87034)	EA	2	*	*	2	2	3 - 22	1A1A5MP4
A O P D495	6625-234-6146	SIGNAL CONDITIONING UNIT TS-2913/ASM-386 245100 (06481)	EA	1					1 - 4	2
AH O R D496M	6625-245-1739	CABLE ASSEMBLY, POWER, ELECTRICAL CX-12107/U 244740 (06481)	EA	1					4 - 1	2W1
AH C R D511M	5995	CABLE ASSEMBLY, POWER, ELECTRICAL CX-12108/L 244741 (06481)	EA	1					4 - 2	2W2
AH C R D529	6625-245-1735	CABLE ASSEMBLY, POWER, ELECTRICAL CX-12110/U 244745 (06481)	EA	1					4 - 3	2W6
AH O R D544	6625-245-1737	CABLE ASSEMBLY, POWER, ELECTRICAL CX-12111/U 244746 (06481)	EA	1					4 - 4	2W7
AH O R D571	6625-245-1740	CABLE ASSEMBLY, SPECIAL PURPOSE, ELECTRICAL CX-12130/U 245153 (06481)	EA	1					4 - 5	2W3
A O R D597	6625	SIGNAL CONDITIONING UNIT SUBASSEMBLY 245103 (06481)	EA	1					4 - 6	2A1
P O D654M	5930-997-7974	BODY, DUST AND MOISTURE SEAL MILB5423-2 (81349)	EA	5	REF	REF	REF	REF	4 - 14	2A1MP12
P C T D923M	6625	CIRCUIT CARD ASSEMBLY 245136 (06481)	EA	1	REF	REF	REF	REF	4 - 88	2A1A2A17
P O T D935A	6625	CIRCUIT CARD ASSEMBLY 245136 (06481)	EA	1	REF	REF	REF	REF	4 - 44	2A1A1A1
P O T D936M	6625	CIRCUIT CARD ASSEMBLY 245136 (06481)	EA	1	REF	REF	REF	REF	4 - 20	2A1A3A6
P O T D949M	6625	CIRCUIT CARD ASSEMBLY 245136 (06481)	EA	1	REF	REF	REF	REF	4 - 22	2A1A3A8

SECTION III. REPAIR PARTS FOR ORGANIZATIONAL MAINTENANCE (CONTINUED)

(1) SMA CODE INDEX NO	(2) FEDERAL STOCK NUMBER	(3) DESCRIPTION REFERENCE NUMBER & MFR. CODE	(4) UNIT OF MEAS	(5) QTY INCIN UNIT	(6) 15-DAY ORGANIZATIONAL MAINTENANCE ALLOW				(7) ILLUSTRATIONS FIGURE & ITCM NO	(8) REFERENCE DESIGNATION
					(a) 1-5	(b) 6-20	(c) 21-50	(d) 51-100		
P O T 0962M	6625	CIRCUIT CARD ASSEMBLY 245136 (06481)	EA	1	REF	REF	REF	REF	4 - 25	2A1A3A11
P O T 0972M	6625	CIRCUIT CARD ASSEMBLY 245136 (06481)	EA	1	REF	REF	REF	REF	4 - 27	2A1A3A13
P O T 0988M	6625	CIRCUIT CARD ASSEMBLY 245136 (06481)	EA	1	REF	REF	REF	REF	4 - 28	2A1A3A14
P C T E001A	6625	CIRCUIT CARD ASSEMBLY 245136 (06481)	EA	1	REF	REF	REF	REF	4 - 29	2A1A3A15
G O T E002M	6625	CIRCUIT CARD ASSEMBLY 245145 (06481)	EA	1					4 - 37	2A1A3A29
G O T E025M	6625	CIRCUIT CARD ASSEMBLY 245145 (06481)	EA	1					4 - 38	2A1A3A30
P O T E048M	6625	CIRCUIT CARD ASSEMBLY 245149 (06481)	EA	1	*	*	*	1	4 - 36	2A1A3A28
P C T E066M	6625	CIRCUIT CARD ASSEMBLY 245177 (06481)	EA	1	*	*	*	1	4 - 35	2A1A3A27
P C T E086M	6625	CIRCUIT CARD ASSEMBLY 245190 (06481)	EA	1	*	*	*	1	4 - 34	2A1A3A26
P O T E132M	6625	CIRCUIT CARD ASSEMBLY 245203-1 (06481)	EA	1	REF	REF	REF	REF	4 - 66	2A1A1A23
P O T E146M	6625	CIRCUIT CARD ASSEMBLY 245203-1 (06481)	EA	1	REF	REF	REF	REF	4 - 65	2A1A1A22
P O T E160M	6625	CIRCUIT CARD ASSEMBLY 245203-1 (06481)	EA	1	REF	REF	REF	REF	4 - 91	2A1A1A20
P O T E174M	6625	CIRCUIT CARD ASSEMBLY 245203-1 (06481)	EA	1	REF	REF	REF	REF	4 - 69	2A1A1A26
P O T E188M	6625	CIRCUIT CARD ASSEMBLY 245203-1 (06481)	EA	1	REF	REF	REF	REF	4 - 70	2A1A1A27
P O T E202A	6625	CIRCUIT CARD ASSEMBLY 245203-2 (06481)	EA	1	REF	REF	REF	REF	4 - 30	2A1A3A16
P O Y E216M	6625	CIRCUIT CARD ASSEMBLY 245203-1 (06481)	EA	1	REF	REF	REF	REF	4 - 77	2A1A2A6
P O T E230M	6625	CIRCUIT CARD ASSEMBLY 245203-2 (06481)	EA	1	REF	REF	REF	REF	4 - 45	2A1A1A2
P O T E244M	6625	CIRCUIT CARD ASSEMBLY 245203-2 (06481)	EA	1	REF	REF	REF	REF	4 - 60	2A1A1A17
P C T E258M	6625	CIRCUIT CARD ASSEMBLY 245203-2 (06481)	EA	1	REF	REF	REF	REF	4 - 61	2A1A1A18
P O T E272M	6625	CIRCUIT CARD ASSEMBLY 245203-2 (06481)	EA	1	REF	REF	REF	REF	4 - 62	2A1A1A19
P O T E286M	6625	CIRCUIT CARD ASSEMBLY 245203-2 (06481)	EA	1	REF	REF	REF	REF	4 - 97	2A1A1A26
P O T E300M	6625	CIRCUIT CARD ASSEMBLY 245203-2 (06481)	EA	1	REF	REF	REF	REF	4 - 80	2A1A2A9
P O T E314M	6625	CIRCUIT CARD ASSEMBLY 245203-2 (06481)	EA	1	REF	REF	REF	REF	4 - 87	2A1A2A16
P C T E328M	6625	CIRCUIT CARD ASSEMBLY 245203-2 (06481)	EA	1	REF	REF	REF	REF	4 - 89	2A1A2A18
P O T E342M	6625	CIRCUIT CARD ASSEMBLY 245203-2 (06481)	EA	1	REF	REF	REF	REF	4 - 9J	2A1A2A19

SECTION III. REPAIR PARTS FOR ORGANIZATIONAL MAINTENANCE (CONTINUED)

(1) SMR CODE INDEX NO.	(2) FEDERAL STOCK NUMBER	(3) DESCRIPTION REFERENCE NUMBER & MFR. CODE	(4) UNIT OF MEAS USABLE ON CODE	(5) QTY INC IN UNIT	(6) 15 DAY ORGANIZATIONAL MAINTENANCE ALLOW				(7) ILLUSTRATIONS FIGURE & ITEM NO	(8) REFERENCE DESIGNATION
					(a) 15	(b) 0-20	(c) 21-50	(d) 51-100		
P O T E3544	6625	CIRCUIT CARD ASSEMBLY 245203-2 (06481)	EA	1	REF	REF	REF	REF	4 - 18	2A1A3A4
P O T E370M	6625	CIRCUIT CARD ASSEMBLY 245203-2 (06481)	EA	1	REF	REF	REF	REF	4 - 21	2A1A3A7
P O T E384M	6625	CIRCUIT CARD ASSEMBLY 245203-2 (06481)	EA	1	REF	REF	REF	REF	4 - 26	2A1A3A12
P O T E398M	6625	CIRCUIT CARD ASSEMBLY 245203-3 (06481)	EA	1	REF	REF	REF	REF	4 - 46	2A1A1A3
P O T E412M	6625	CIRCUIT CARD ASSEMBLY 245203-3 (06481)	EA	1	REF	REF	REF	REF	4 - 48	2A1A1A5
P C F E425A	6625	CIRCUIT CARD ASSEMBLY 245203-3 (06481)	EA	1	REF	REF	REF	REF	4 - 53	2A1A1A10
P G T E426M	6625	CIRCUIT CARD ASSEMBLY 245203-3 (06481)	EA	1	REF	REF	REF	REF	4 - 57	2A1A1A14
P O T E440M	6625	CIRCUIT CARD ASSEMBLY 245203-3 (06481)	EA	1	REF	REF	REF	REF	4 - 74	2A1A2A1
P O T E454M	6625	CIRCUIT CARD ASSEMBLY 245203-3 (06481)	EA	1	REF	REF	REF	REF	4 - 75	2A1A2A2
P O T E468M	6625	CIRCUIT CARD ASSEMBLY 245203-3 (06481)	EA	1	REF	REF	REF	REF	4 - 81	2A1A2A10
P O T E482M	6625	CIRCUIT CARD ASSEMBLY 245203-3 (06481)	EA	1	REF	REF	REF	REF	4 - 82	2A1A2A11
P O T E496M	6625	CIRCUIT CARD ASSEMBLY 245203-3 (06481)	EA	1	REF	REF	REF	REF	4 - 83	2A1A2A12
P O T E510M	6625	CIRCUIT CARD ASSEMBLY 245203-3 (06481)	EA	1	REF	REF	REF	REF	4 - 85	2A1A2A14
P O T E524M	6625	CIRCUIT CARD ASSEMBLY 245203-3 (06481)	EA	1	REF	REF	REF	REF	4 - 86	2A1A2A15
P C T F933M	6625	CIRCUIT CARD ASSEMBLY 245203-3 (06481)	EA	1	REF	REF	REF	REF	4 - 16	2A1A3A2
P C T E552M	6625	CIRCUIT CARD ASSEMBLY 245203-3 (06481)	EA	1	REF	REF	REF	REF	4 - 19	2A1A3A5
P O T E566M	6625	CIRCUIT CARD ASSEMBLY 245203-3 (06481)	EA	1	REF	REF	REF	REF	4 - 23	2A1A3A9
P O T E580M	6625	CIRCUIT CARD ASSEMBLY 245203-4 (06481)	EA	1	REF	REF	REF	REF	4 - 47	2A1A1A4
P O T E593A	6625	CIRCUIT CARD ASSEMBLY 245203-4 (06481)	EA	1	REF	REF	REF	REF	4 - 76	2A1A2A3
P O T E594M	6625	CIRCUIT CARD ASSEMBLY 245203-5 (06481)	EA	1	REF	REF	REF	REF	4 - 64	2A1A1A21
P C T E608M	6625	CIRCUIT CARD ASSEMBLY 245203-5 (06481)	EA	1	REF	REF	REF	REF	4 - 67	2A1A1A24
P O T E622M	6625	CIRCUIT CARD ASSEMBLY 245203-5 (06481)	EA	1	REF	REF	REF	REF	4 - 68	2A1A1A25
P O T E636M	6625	CIRCUIT CARD ASSEMBLY 245203-5 (06481)	EA	1	REF	REF	REF	REF	4 - 71	2A1A1A28
P O T E650M	6625	CIRCUIT CARD ASSEMBLY 245203-5 (06481)	EA	1	REF	REF	REF	REF	4 - 72	2A1A1A29
P O T E664M	6625	CIRCUIT CARD ASSEMBLY 245203-5 (06481)	EA	1	REF	REF	REF	REF	4 - 63	2A1A1A20

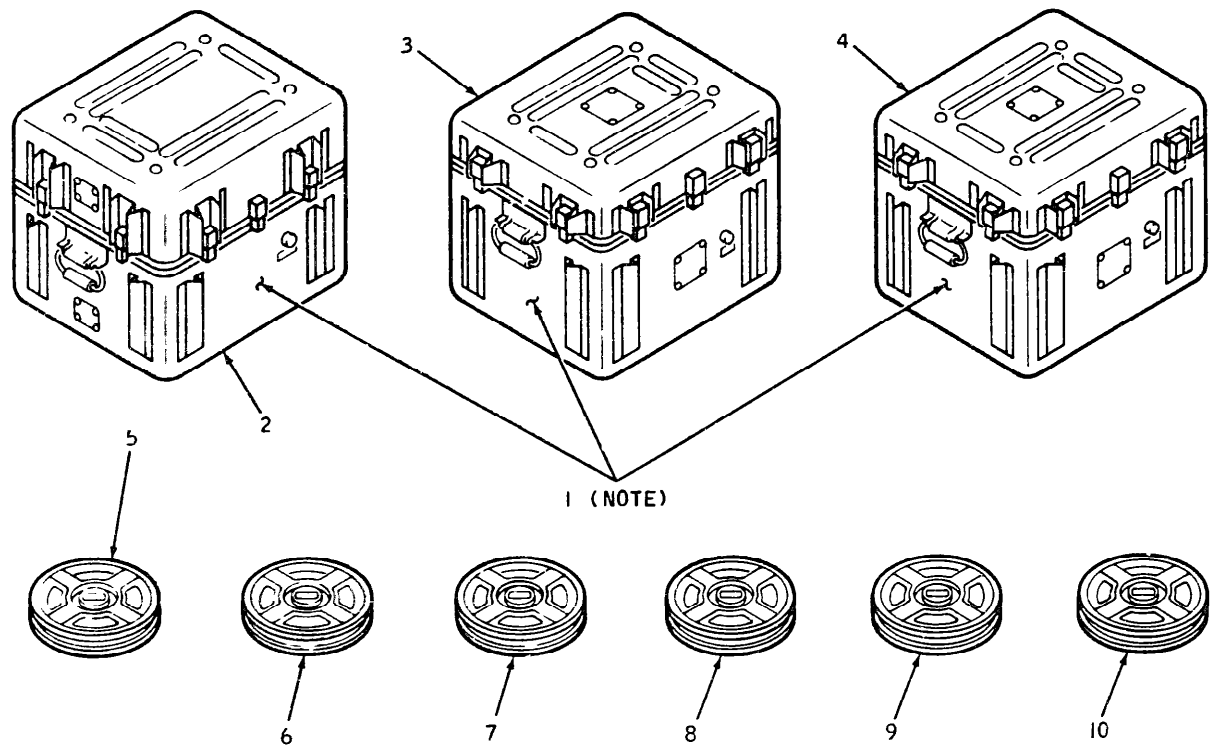
SECTION III. REPAIR PARTS FOR ORGANIZATIONAL MAINTENANCE (CONTINUED)

(1) SMR CODE	(2) FEDERAL STOCK NUMBER	(3) DESCRIPTION	(4) UNIT OF MEAS.	(5) QTY INC IN UNIT	(6) 15-DAY ORGANIZATIONAL MAINTENANCE ALLOW				(7) ILLUSTRATIONS FIGURE & ITEM NO	(8) REFERENCE DESIGNATION
					(a) 1-5	(b) 6-20	(c) 21-50	(d) 51-100		
INDEX NO		REFERENCE NUMBER & MFR. CODE	USABLE ON CODE							
P O T E678M	6625	CIRCUIT CARD ASSEMBLY 245203-5 (06481)	EA	1	REF	REF	REF	REF	4 - 92	2A1A2A21
P O T E692M	6625	CIRCUIT CARD ASSEMBLY 245203-5 (06481)	EA	1	REF	REF	REF	REF	4 - 93	2A1A2A22
P O T E706M	6625	CIRCUIT CARD ASSEMBLY 245203-5 (06481)	EA	1	REF	REF	REF	REF	4 - 94	2A1A2A23
P O T E720M	6625	CIRCUIT CARD ASSEMBLY 245203-5 (06481)	EA	1	REF	REF	REF	REF	4 - 95	2A1A2A24
P O T E734M	6625	CIRCUIT CARD ASSEMBLY 245203-5 (06481)	EA	1	REF	REF	REF	REF	4 - 96	2A1A2A25
P O T E748M	6625	CIRCUIT CARD ASSEMBLY 245209-1 (06481)	EA	1	REF	REF	REF	REF	4 - 49	2A1A1A6
P O T E761M	6625	CIRCUIT CARD ASSEMBLY 245209-1 (06481)	EA	1	REF	REF	REF	REF	4 - 56	2A1A1A13
P O T E774M	6625	CIRCUIT CARD ASSEMBLY 245209-1 (06481)	EA	1	REF	REF	REF	REF	4 - 78	2A1A2A7
P O T E787M	6625	CIRCUIT CARD ASSEMBLY 245209-1 (06481)	EA	1	REF	REF	REF	REF	4 - 79	2A1A2A8
P O T E800M	6625	CIRCUIT CARD ASSEMBLY 245209-1 (06481)	EA	1	REF	REF	REF	REF	4 - 84	2A1A2A13
P O T E813M	6625	CIRCUIT CARD ASSEMBLY 245209-1 (06481)	EA	1	REF	REF	REF	REF	4 - 17	2A1A3A3
P O T E826M	6625	CIRCUIT CARD ASSEMBLY 245209-1 (06481)	EA	1	REF	REF	REF	REF	4 - 24	2A1A3A10
P O T E839M	6625	CIRCUIT CARD ASSEMBLY 245209-2 (06481)	EA	1	REF	REF	REF	REF	4 - 50	2A1A1A7
P O T E852M	6625	CIRCUIT CARD ASSEMBLY 245209-2 (06481)	EA	1	REF	REF	REF	REF	4 - 52	2A1A1A9
P O T E865M	6625	CIRCUIT CARD ASSEMBLY 245209-2 (06481)	EA	1	REF	REF	REF	REF	4 - 55	2A1A1A12
P O T E878M	6625	CIRCUIT CARD ASSEMBLY 245209-2 (06481)	EA	1	REF	REF	REF	REF	4 - 51	2A1A1A8
P O T E891M	6625	CIRCUIT CARD ASSEMBLY 245209-2 (06481)	EA	1	REF	REF	REF	REF	4 - 54	2A1A1A11
P O T E904M	6625	CIRCUIT CARD ASSEMBLY 245209-2 (06481)	EA	1	REF	REF	REF	REF	4 - 59	2A1A1A16
P O T E917M	6625	CIRCUIT CARD ASSEMBLY 245209-2 (06481)	EA	1	REF	REF	REF	REF	4 - 58	2A1A1A15
P O T E930M	6625	CIRCUIT CARD ASSEMBLY 245209-2 (06481)	EA	1	REF	REF	REF	REF	4 - 15	2A1A3A1
P O T E943M	6625	CIRCUIT CARD ASSEMBLY 245220 (06481)	EA	1	REF	REF	REF	REF	4 - 99	2A1A2A28
P O T E984M	6625	CIRCUIT CARD ASSEMBLY 245220 (06481)	EA	1	REF	REF	REF	REF	4 -100	2A1A2A29
P O T F026M	6625	CIRCUIT CARD ASSEMBLY 245220 (06481)	EA	1	REF	REF	REF	REF	4 -101	2A1A2A30
P O T F066A	6625	CIRCUIT CARD ASSEMBLY 245220 (06481)	EA	1	REF	REF	REF	REF	4 - 33	2A1A3A25
P O T F067M	6625	CIRCUIT CARD ASSEMBLY 248264 (06481)	EA	1	*	*	*	1	4 - 73	2A1A1A30



SECTION III. REPAIR PARTS FOR ORGANIZATIONAL MAINTENANCE (CONTINUED)

(1) SMR CODE	(2) FEDERAL STOCK NUMBER	(3) DESCRIPTION  REFERENCE NUMBER & MFR CODE	(4) USABLE ON CODE	(5) UNIT OF MEAS.	(6) QTY INC IN UNIT	(6) 15 DAY ORGANIZATIONAL MAINTENANCE ALW				(7) ILLUSTRATIONS FIGURE & ITEM NO	(8) REFERENCE DESIGNATION
						(a)	(b)	(c)	(d)		
						15	6 20	21 50	51 100		
P O T F106M	6625	CIRCUIT CARD ASSEMBLY 248265 (06481)		EA	1	*	*	*	1	4 - 98	2A1A2A27
P O T F141M	6625	CIRCUIT CARD ASSEMBLY 248265 (06481)		EA	1	REF	REF	REF	REF	4 - 31	2A1A3A22
P O T F178M	6625	CIRCUIT CARD ASSEMBLY 248266 (06481)		EA	1	*	*	*	1	4 - 32	2A1A3A23
P O F452M	5355-751-7597	KNOB, CONTROL MS91528-1B2B (96906)		EA	1	*	*	*	1	4 - 7	2A1MP2R
P C F453A	6240-132-4011	LAMP, INCANDESCENT CMB-783 (71744)		EA	9	REF	REF	REF	REF	4 - 9	2A1DS1
P C F454A	6240-132-4011	LAMP, INCANDESCENT CMB-783 (71744)		EA		REF	REF	REF	REF	4 - 10	2A1DS2
P O F455A	6240-132-4011	LAMP, INCANDESCENT CMB-783 (71744)		EA		REF	REF	REF	REF	4 - 11	2A1DS3
P O F456A	6240-132-4011	LAMP, INCANDESCENT CMB-783 (71744)		EA		REF	REF	REF	REF	4 - 12	2A1DS4
P O F457A	6240-132-4011	LAMP, INCANDESCENT CMB-783 (71744)		EA		REF	REF	REF	REF	4 - 13	2A1DS5
P O F458A	6240-132-4011	LAMP, INCANDESCENT CMB-783 (71744)		EA		REF	REF	REF	REF	4 - 40	2A1DS6
P C F459A	6240-132-4011	LAMP, INCANDESCENT CMB-783 (71744)		EA		REF	REF	REF	REF	4 - 41	2A1DS7
P O F460A	6240-132-4011	LAMP, INCANDESCENT CMB-783 (71744)		EA		REF	REF	REF	REF	4 - 42	2A1DS8
P O F461A	6240-132-4011	LAMP, INCANDESCENT CMB-783 (71744)		EA		REF	REF	REF	REF	4 - 43	2A1DS9
P O F467	6210	LENS, INDICATOR LIGHT 6P45TL (87034)		EA	4	*	*	2	2	4 - 39	2A1MP30
P O F468A	6210	LENS, INDICATOR LIGHT 17P45 (87034)		EA	5	REF	REF	REF	REF	4 - 8	2A1MP31
G C T F525M	6625	POWER SUPPLY 247947 (06481)		EA	1					4 - 102	2A1PS1
P O G081A1	6625	TAPE ASSEMBLY CP-941/ASN-86 NCU 667921-1 (06481)		EA	1	*	*	*	*	1 - 5	
P O G081A6	6625	TAPE ASSEMBLY ID-1579/ASN-86 CIU 667923-1 (06481)		EA	1	*	*	*	*	1 - 7	
P O G081B2	6625	TAPE ASSEMBLY AN/ASN-86 OV-ID 670945-1 (06481)		EA	1	*	*	*	*	1 - 8	
P O G081B7	6625	TAPE ASSEMBLY AN/ASN-86 LAF-EAG 670946-1 (06481)		EA	1	*	*	*	*	1 - 9	
P C G081C3	6625	TAPE ASSEMBLY AS/ASN-86 CEF-LDR 670947-1 (06481)		EA	1	*	*	*	*	1 - 10	
P C G081C8	6625	TAPE ASSEMBLY CP-941/ASN-86 NCU 670960-1 (06481)		EA	1	*	*	*	*	1 - 6	



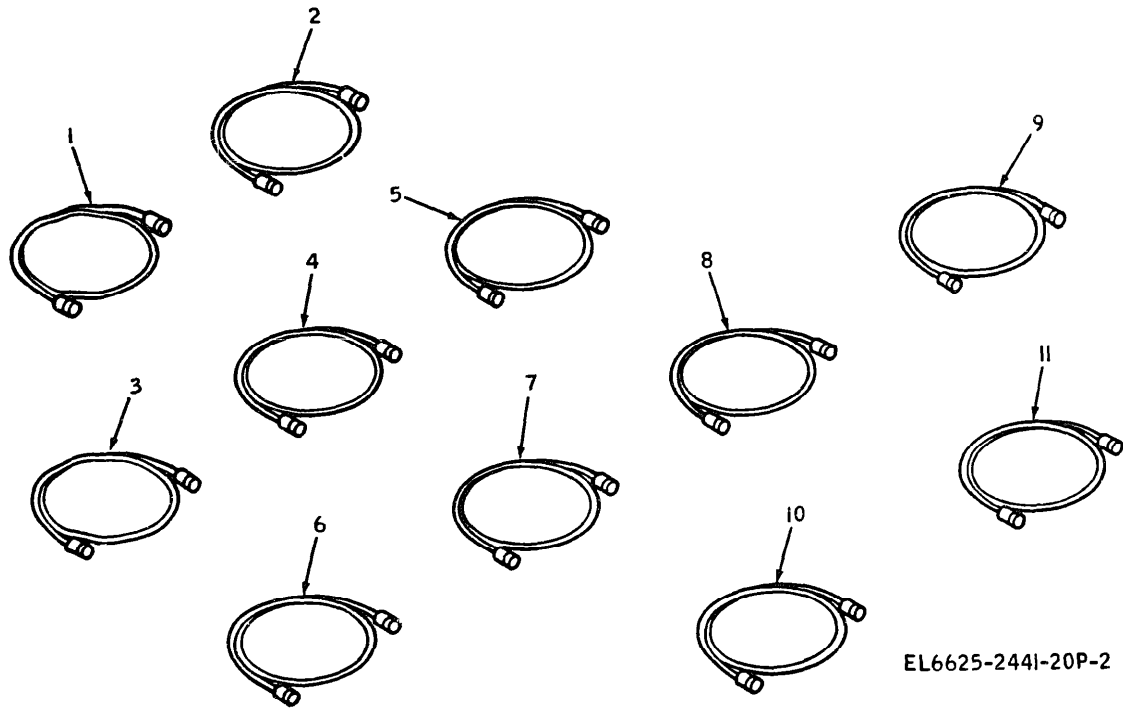
1 (NOTE)

NOTES

ITEM 1 IS MADE UP OF  
ITEMS 2 THRU 10

EL6625-2441-20P-1

Figure 1. Test Set, Navigational Computer-Control Indicator AN/ASM-386



EL6625-2441-20P-2

Figure 2. Accessory Case CY-6757/ASM-386

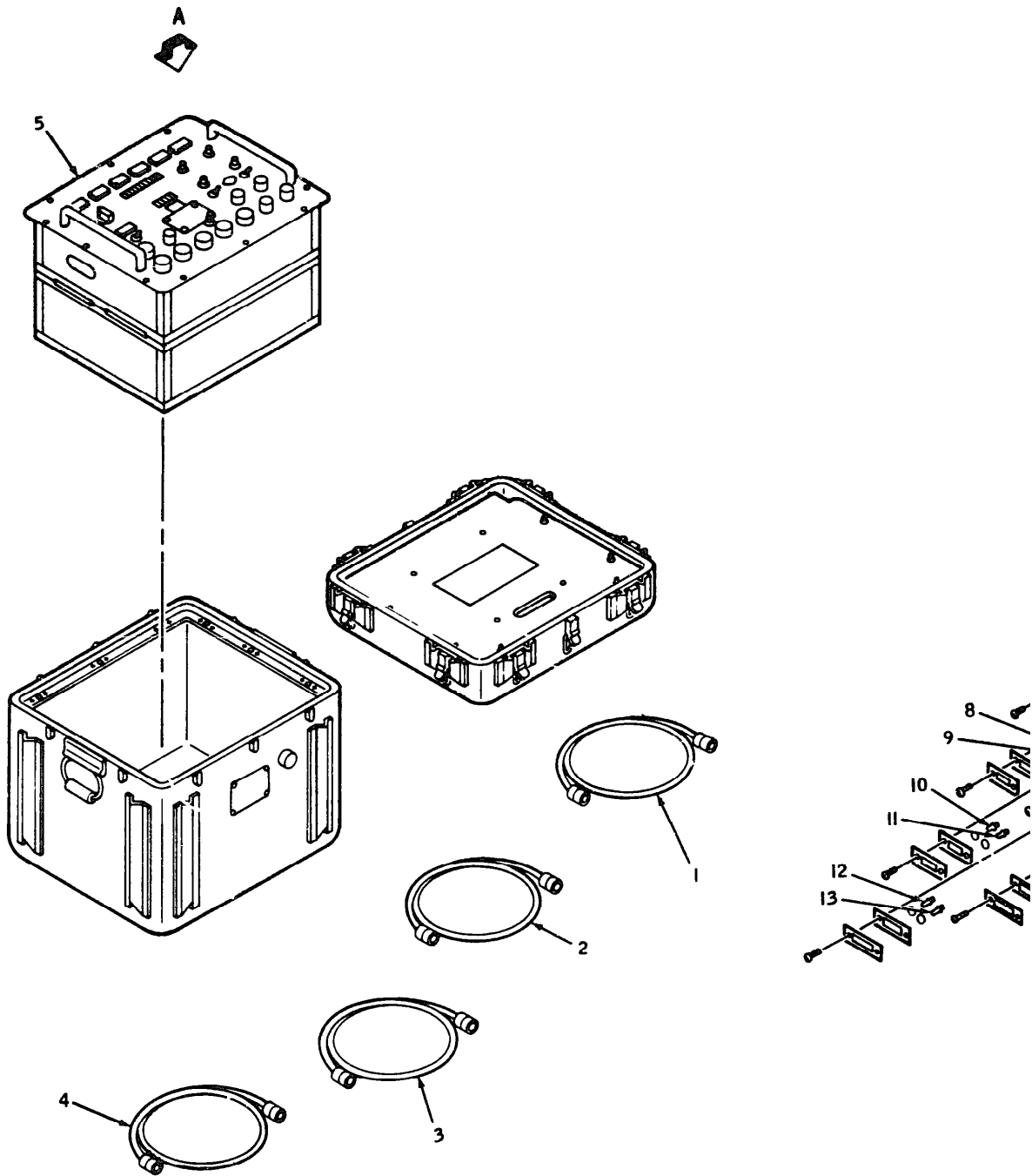
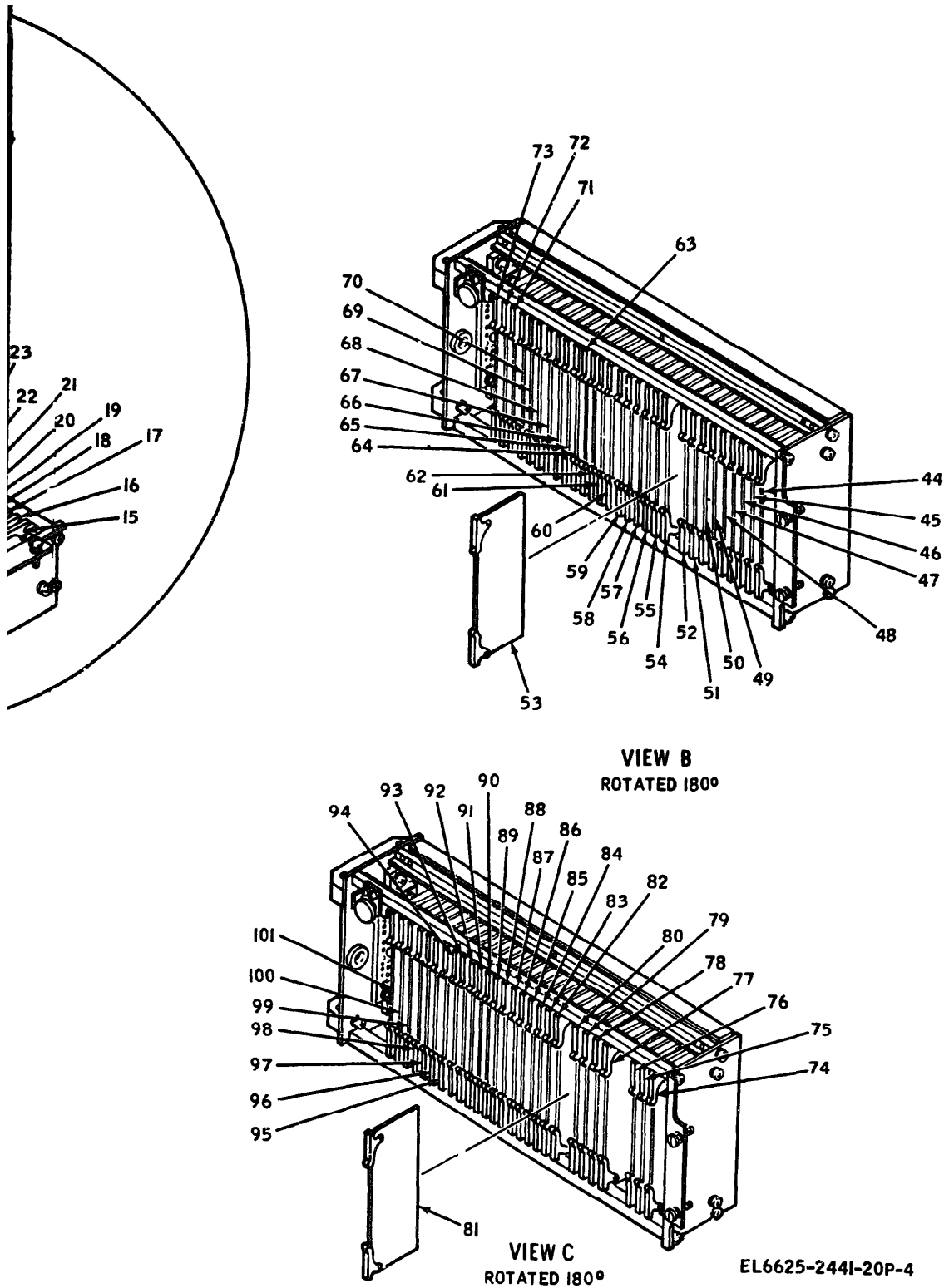
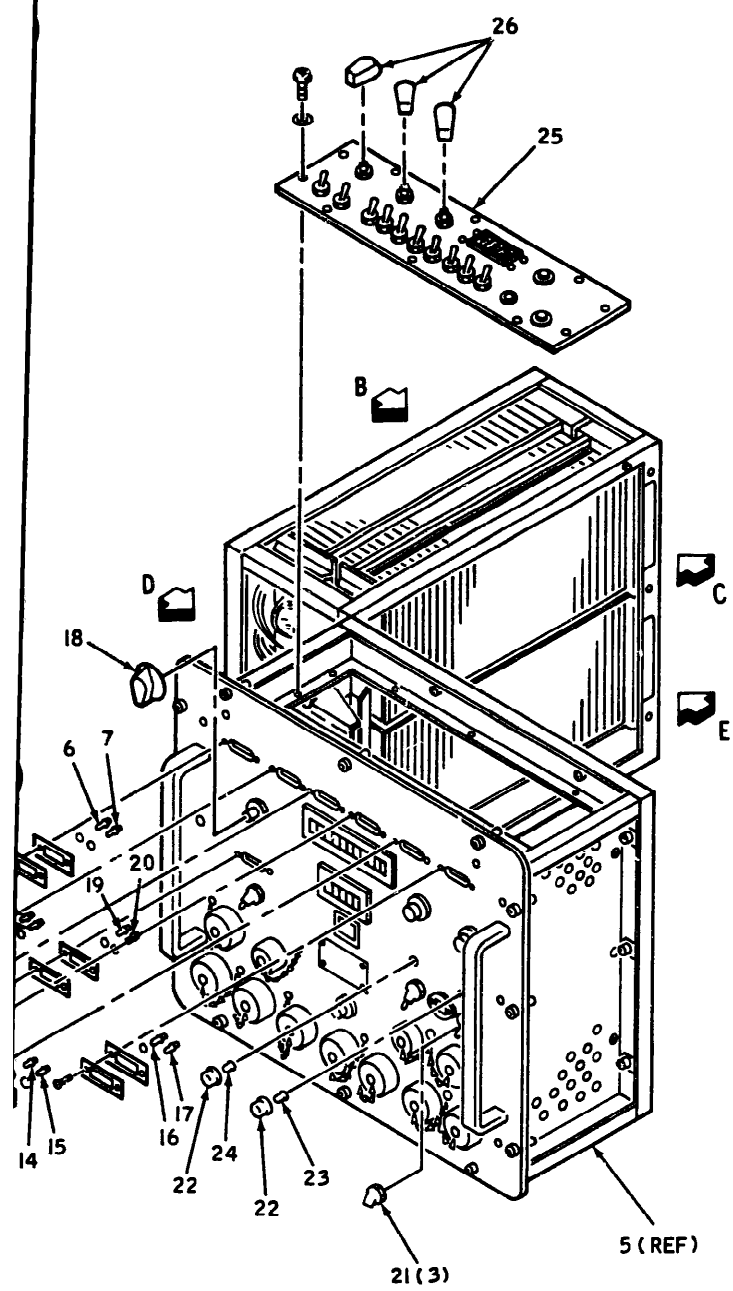


Figure 3. Logic Control Unit TS-2912/ASM-386

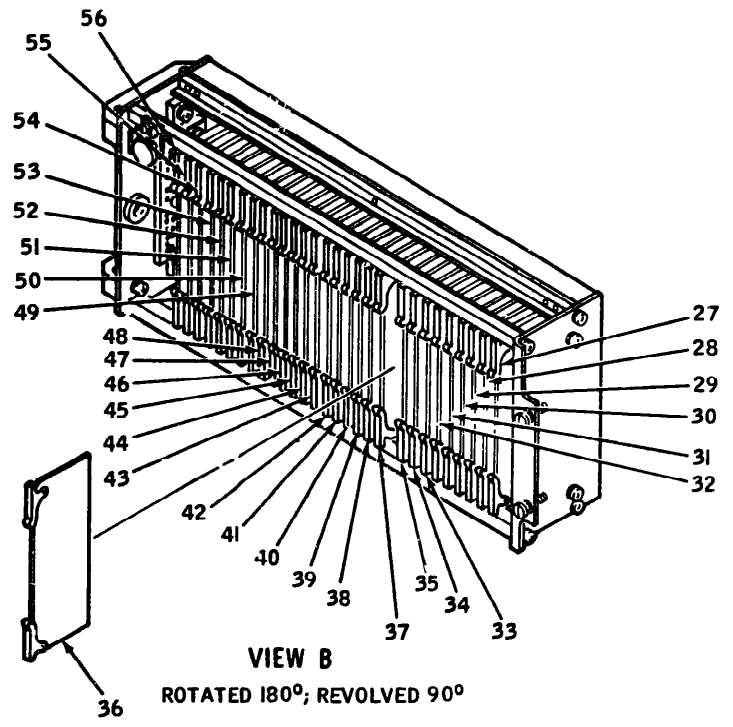


EL6625-2441-20P-4

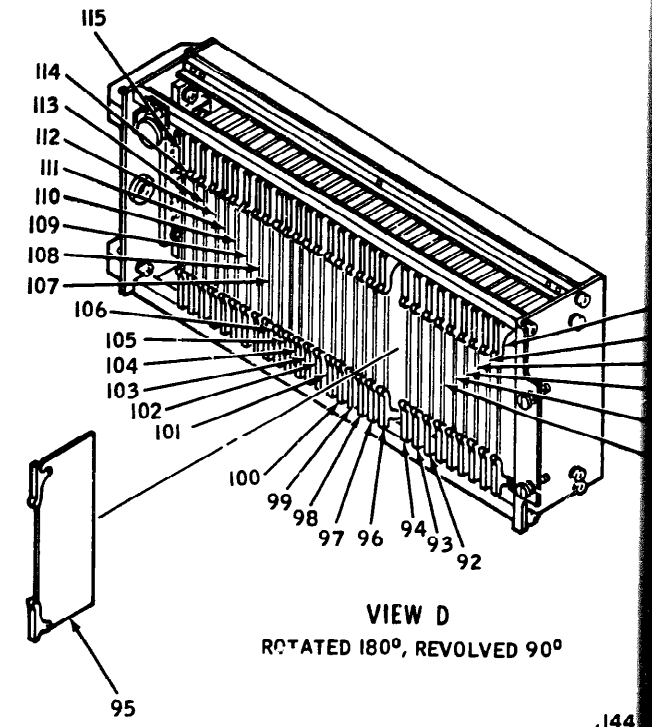
Figure 4. Signal Conditioning Unit  
TS-2913/ASM-386



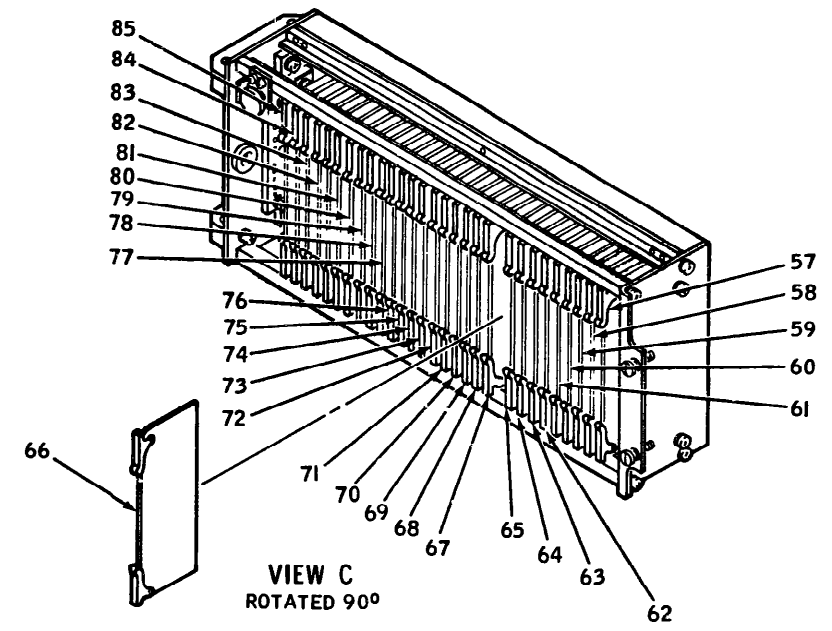
**VIEW A**  
ROTATED 90°; REVOLVED 90°



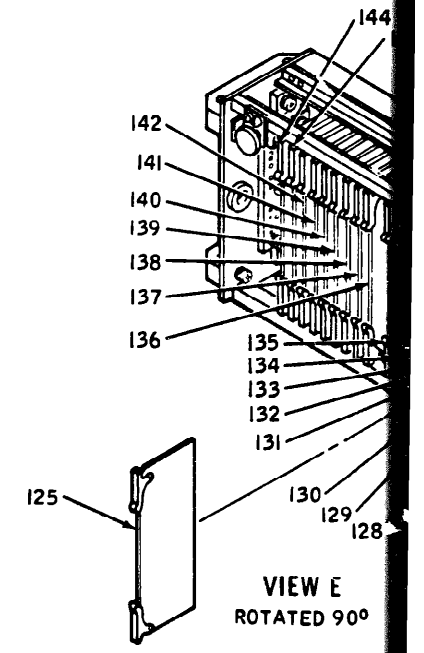
**VIEW B**  
ROTATED 180°; REVOLVED 90°



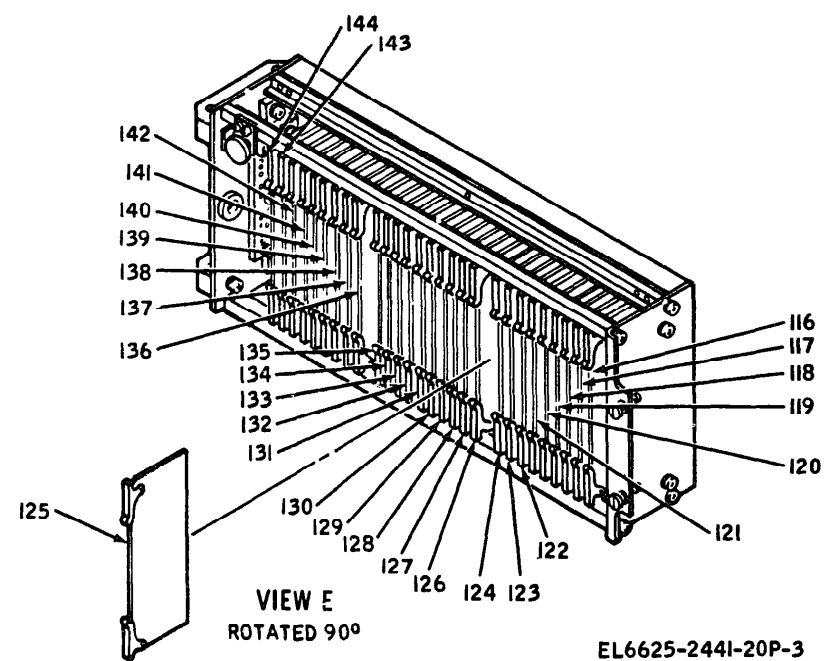
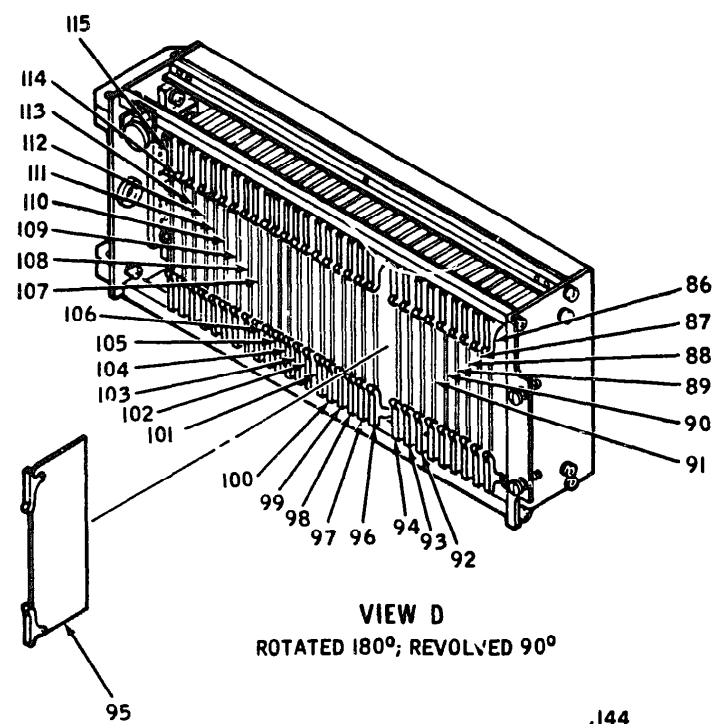
**VIEW D**  
ROTATED 180°; REVOLVED 90°

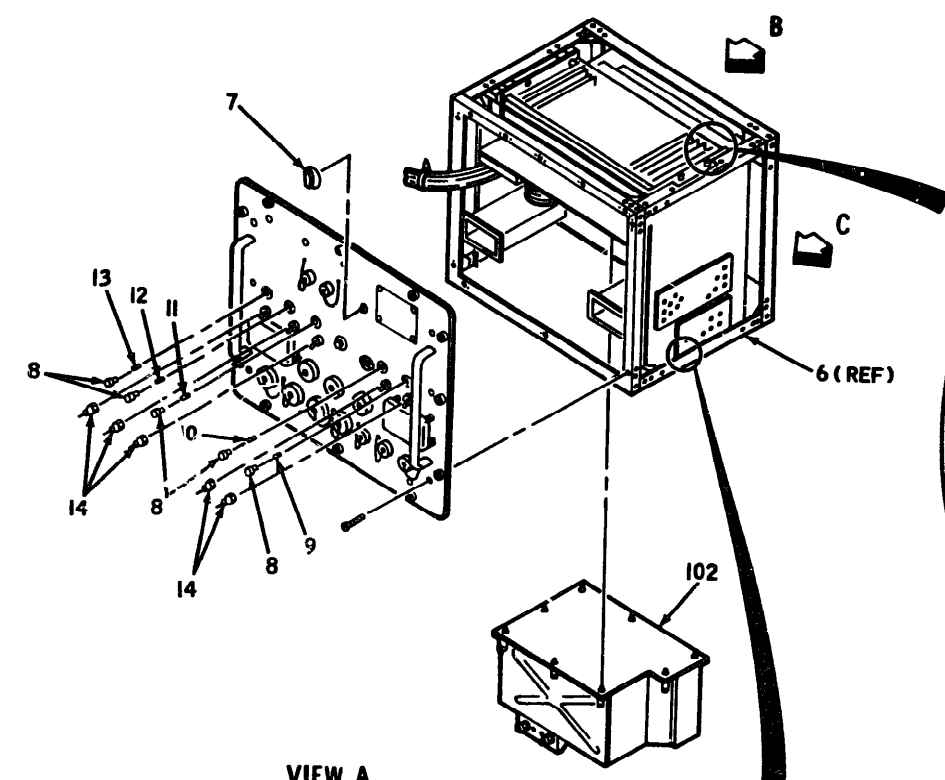
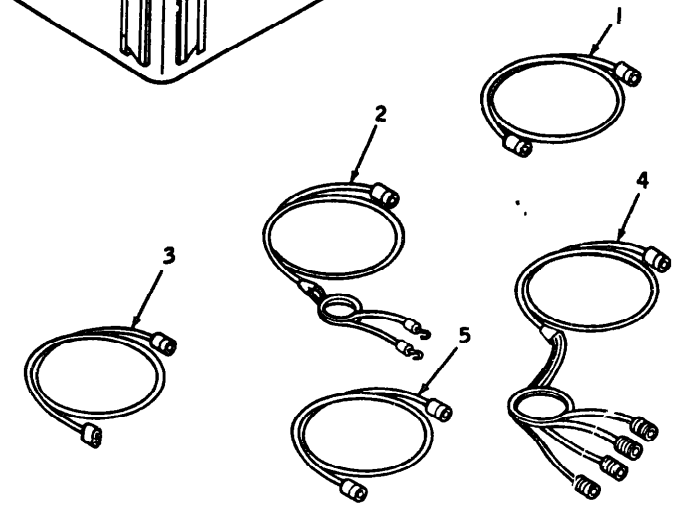
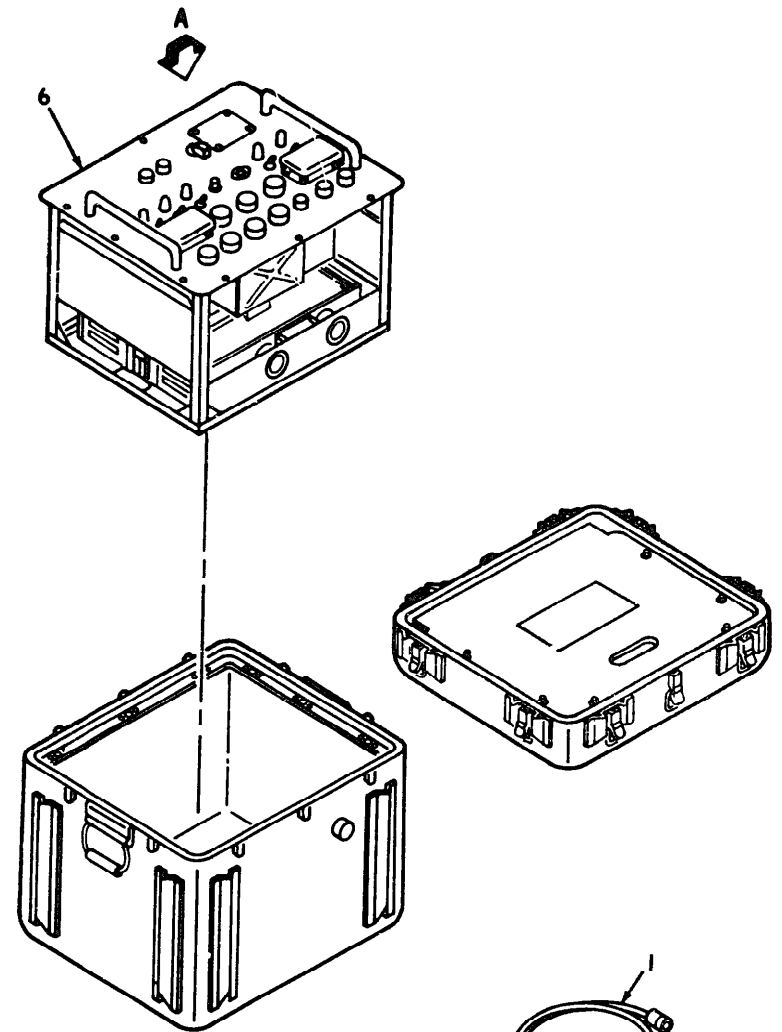


**VIEW C**  
ROTATED 90°

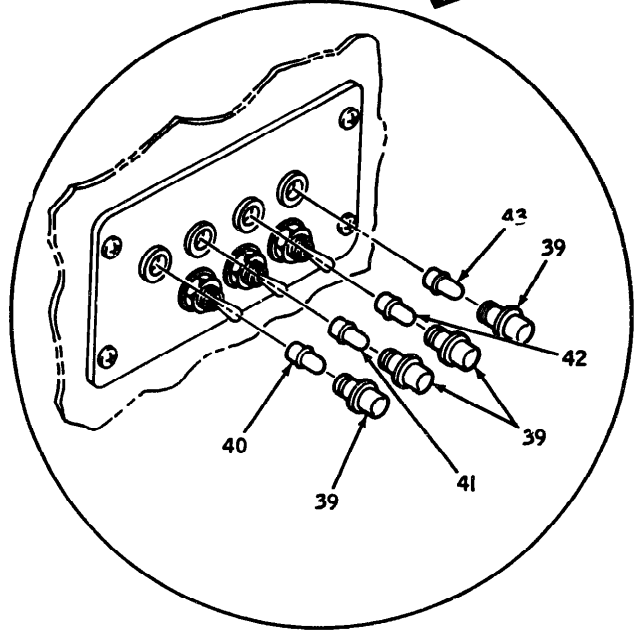
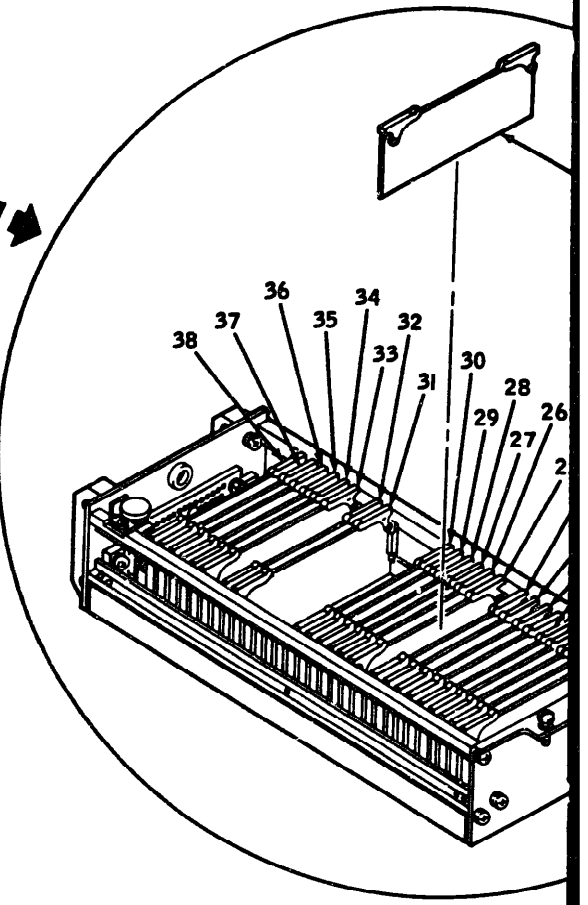


**VIEW E**  
ROTATED 90°





VIEW A  
ROTATED 90°, REVOLVED 90°





SECTION IV. SPECIAL TOOLS, TEST & SUPPORT EQUIPMENT FOR ORGANIZATIONAL MAINTENANCE

(1) SMR CODE INDEX NO	(2) FEDERAL STOCK NUMBER	(3) DESCRIPTION REFERENCE NUMBER & MFR. CODE		(4) UNIT OF MEAS.	(5) QTY INC IN UNIT	(6) 15-DAY ORGANIZATIONAL MAINTENANCE ALW				(7) ILLUSTRATIONS FIGURE & ITEM NO.	(8) REFERENCE DESIGNATION
						(a) 1-5	(b) 6-20	(c) 21-50	(d) 51-100		

(NOT APPLICABLE)

--	--	--	--	--	--	--	--	--	--	--	--

SECTION V. INDEX-FEDERAL STOCK NUMBER CROSS REFERENCE TO INDEX NUMBER

FEDERAL STOCK NUMBER	INDEX NO	FEDERAL STOCK NUMBER	INDEX NO	FEDERAL STOCK NUMBER	INDEX NO
5315-751-756	F452M	6625	8373M	6625	C669M
5325-817-1018	D151M	0025	8387M	0025	C692M
5030-007-7974	D073	0025	8401M	0025	C707M
5030-997-7974	D121M	0025	8415M	0025	C748M
5095	D554M	0025	8429M	0025	D063M
6210	D511M	0025	8443M	0025	D597
6210	3148A	0025	8457M	0025	D923M
6210	F467	0025	8471M	0025	D935A
6220	F468A	0025	8485M	0025	D936M
6220	D132M	0025	8499M	0025	D949M
6220	D133M	0025	8513M	0025	D962M
6220	D134M	0025	8527M	0025	D975M
6220	D135M	0025	8541M	0025	D988M
6220	D136M	0025	8555M	0025	E001A
6220	D137M	0025	8569M	0025	E002M
6220	D138M	0025	8583M	0025	E025M
6220	D139M	0025	8597M	0025	E048M
6220	D140M	0025	8611M	0025	E066M
6220	D141M	0025	8625M	0025	E086M
6220	D142M	0025	8639M	0025	E132M
6220	D143M	0025	8653M	0025	E146M
6220	D144M	0025	8667M	0025	E160M
6220	D145M	0025	8681M	0025	E174M
6220	D146M	0025	8695M	0025	E188M
6220	D147M	0025	8709M	0025	E202A
6220	F453A	0025	8723M	0025	E216M
6220	F454A	0025	8737M	0025	E230M
6220	F455A	0025	8751M	0025	E244M
6220	F456A	0025	8765M	0025	E258M
6220	F457A	0025	8779M	0025	E272M
6220	F458A	0025	8793M	0025	E286M
6220	F459A	0025	8807M	0025	E300M
6220	F460A	0025	8821M	0025	E314M
6220	F46 A	0025	8835M	0025	E328M
6615-245-8476	A209M	0025	8849M	0025	E342M
0025	A494M	0025	8863M	0025	E356M
0025	A879A	0025	8877M	0025	E370M
0025	A885A	0025	8891M	0025	E384M
0025	A899A	0025	8905M	0025	E398M
0025	A909C	0025	8919M	0025	E412M
0025	A919A	0025	8933M	0025	E425A
0025	A921A	0025	8947M	0025	E426M
0025	A939A	0025	8961A	0025	E440M
0025	A953A	0025	8975A	0025	E454M
0025	A966A	0025	8989A	0025	F468M
0025	A967M	0025	C004A	0025	F482M
0025	A981M	0025	C017M	0025	E496M
0025	A995M	0025	C030M	0025	E510M
0025	B010M	0025	C043M	0025	E524M
0025	B024M	0025	C056M	0025	E538M
0025	B038M	0025	C069M	0025	E552M
0025	B052M	0025	C082M	0025	E566M
0025	B065A	0025	C095M	0025	E580M
0025	B066M	0025	C108M	0025	E593A
0025	B080M	0025	C121M	0025	E594M
0025	B094M	0025	C134M	0025	E608M
0025	B108M	0025	C147M	0025	E622M
0025	B122M	0025	C160M	0025	E636M
0025	B176M	0025	C173A	0025	E650M
0025	B150M	0025	C186M	0025	E664M
0025	B164M	0025	C199M	0025	E678M
0025	B178M	0025	C212M	0025	E692M
0025	B192M	0025	C225M	0025	E706M
0025	B206M	0025	C238A	0025	E720M
0025	B220M	0025	C251A	0025	E734M
0025	B234M	0025	C264M	0025	E748M
0025	B248M	0025	C305M	0025	E761M
0025	B262M	0025	C346M	0025	E774M
0025	B276M	0025	C387M	0025	E787M
0025	B290M	0025	C428M	0025	E800M
0025	B304M	0025	C469M	0025	E813M
0025	B318M	0025	C510M	0025	E826M
0025	B332M	0025	C551M	0025	E839M
0025	B346M	0025	C592M	0025	E852M
0025	B359M	0025	C633M	0025	E865M



SECTION V. INDEX - REFERENCE NUMBER CROSS-REFERENCE TO FIGURE AND ITEM NUMBER

REFERENCE NUMBER	MFG CODE	FIGURE & ITEM NO	REFERENCE NUMBER	MFG CODE	FIGURE & ITEM NO	REFERENCE NUMBER	MFG CODE	FIGURE & ITEM NO
CMR-783	71744	3 - 6	245160	06481	2 - 8	245203-3	06481	4 - 83
CMR-783	71744	3 - 7	245161	06481	2 - 9	245203-3	06481	4 - 85
CMR-783	71744	3 - 8	245162	06481	2 - 10	245203-3	06481	4 - 86
CMR-783	71744	3 - 9	245163	06481	2 - 11	245203-3	06481	3 - 32
CMR-783	71744	3 - 10	245164	06481	2 - 5	245203-3	06481	3 - 35
CMR-783	71744	3 - 11	245165	06481	3 - 2	245203-3	06481	3 - 40
CMR-783	71744	3 - 12	245166	06481	2 - 1	245203-3	06481	3 - 43
CMR-783	71744	3 - 13	245167	06481	3 - 3	245203-3	06481	3 - 45
CMR-783	71744	3 - 14	245168	06481	3 - 4	245203-3	06481	3 - 46
CMR-783	71744	3 - 15	245169	06481	4 - 35	245203-3	06481	3 - 48
CMR-783	71744	3 - 16	245170	06481	4 - 34	245203-3	06481	3 - 58
CMR-783	71744	3 - 17	245203-1	06481	1 - 3	245203-3	06481	3 - 66
CMR-783	71744	3 - 19	245203-1	06481	3 - 92	245203-3	06481	3 - 67
CMR-783	71744	3 - 20	245203-1	06481	3 - 93	245203-3	06481	3 - 71
CMR-783	71744	3 - 23	245203-1	06481	3 - 94	245203-3	06481	3 - 74
CMR-783	71744	3 - 24	245203-1	06481	3 - 98	245203-3	06481	3 - 76
CMR-783	71744	4 - 9	245203-1	06481	3 - 128	245203-3	06481	3 - 97
CMR-783	71744	4 - 10	245203-1	06481	3 - 129	245203-3	06481	3 - 100
CMR-783	71744	4 - 11	245203-1	06481	3 - 130	245203-3	06481	3 - 107
CMR-783	71744	4 - 12	245203-1	06481	4 - 65	245203-3	06481	3 - 110
CMR-783	71744	4 - 13	245203-1	06481	4 - 66	245203-3	06481	3 - 121
CMR-783	71744	4 - 40	245203-1	06481	4 - 69	245203-3	06481	3 - 127
CMR-783	71744	4 - 41	245203-1	06481	4 - 70	245203-3	06481	3 - 131
CMR-783	71744	4 - 42	245203-1	06481	4 - 77	245203-3	06481	3 - 133
CMR-783	71744	4 - 43	245203-1	06481	4 - 91	245203-3	06481	4 - 47
CMR-783	81349	3 - 21	245203-2	06481	3 - 28	245203-3	06481	4 - 76
CMR-783	81349	4 - 14	245203-2	06481	3 - 37	245203-3	06481	3 - 68
MS91528-1A4B	96906	3 - 26	245203-2	06481	3 - 79	245203-3	06481	3 - 65
MS91528-1B2B	96906	4 - 7	245203-2	06481	3 - 80	245203-3	06481	3 - 70
MS91528-1B4B	96906	3 - 18	245203-2	06481	3 - 88	245203-3	06481	3 - 72
7P-45	87034	3 - 22	245203-2	06481	3 - 135	245203-3	06481	3 - 73
7P-45	87034	4 - 8	245203-2	06481	4 - 18	245203-3	06481	3 - 75
2451710	06481	1 - 1	245203-2	06481	4 - 21	245203-3	06481	3 - 116
2451710	06481	4 - 1	245203-2	06481	4 - 26	245203-3	06481	3 - 117
2451710	06481	4 - 2	245203-2	06481	4 - 30	245203-3	06481	3 - 118
2451710	06481	4 - 3	245203-2	06481	4 - 45	245203-3	06481	3 - 119
2451710	06481	4 - 4	245203-2	06481	4 - 60	245203-3	06481	3 - 120
2451710	06481	2 - 2	245203-2	06481	4 - 61	245203-3	06481	3 - 122
2451710	06481	1 - 4	245203-2	06481	4 - 62	245203-3	06481	3 - 123
2451710	06481	4 - 6	245203-2	06481	4 - 80	245203-3	06481	3 - 124
2451710	06481	3 - 36	245203-2	06481	4 - 87	245203-3	06481	3 - 125
2451710	06481	3 - 38	245203-2	06481	4 - 89	245203-3	06481	3 - 126
2451710	06481	3 - 82	245203-2	06481	4 - 90	245203-3	06481	4 - 63
2451710	06481	3 - 83	245203-2	06481	4 - 97	245203-3	06481	4 - 64
2451710	06481	3 - 95	245203-2	06481	3 - 27	245203-3	06481	4 - 67
2451710	06481	3 - 96	245203-2	06481	3 - 30	245203-3	06481	4 - 68
2451710	06481	3 - 105	245203-2	06481	3 - 44	245203-3	06481	4 - 71
2451710	06481	4 - 20	245203-2	06481	3 - 47	245203-3	06481	4 - 72
2451710	06481	4 - 22	245203-2	06481	3 - 49	245203-3	06481	4 - 92
2451710	06481	4 - 25	245203-2	06481	3 - 51	245203-3	06481	4 - 93
2451710	06481	4 - 27	245203-2	06481	3 - 59	245203-3	06481	4 - 94
2451710	06481	4 - 28	245203-2	06481	3 - 61	245203-3	06481	4 - 95
2451710	06481	4 - 29	245203-2	06481	3 - 63	245203-3	06481	4 - 96
2451710	06481	4 - 44	245203-2	06481	3 - 64	245203-3	06481	3 - 29
2451710	06481	4 - 88	245203-2	06481	3 - 77	245203-3	06481	3 - 31
2451710	06481	3 - 53	245203-2	06481	3 - 89	245203-3	06481	3 - 33
2451710	06481	3 - 136	245203-2	06481	3 - 99	245203-3	06481	3 - 34
2451710	06481	3 - 137	245203-2	06481	3 - 101	245203-3	06481	3 - 39
2451710	06481	3 - 138	245203-2	06481	3 - 102	245203-3	06481	3 - 41
2451710	06481	3 - 54	245203-2	06481	3 - 103	245203-3	06481	3 - 42
2451710	06481	3 - 86	245203-2	06481	3 - 104	245203-3	06481	3 - 50
2451710	06481	3 - 87	245203-2	06481	3 - 109	245203-3	06481	3 - 57
2451710	06481	3 - 90	245203-2	06481	3 - 132	245203-3	06481	3 - 60
2451710	06481	3 - 91	245203-2	06481	3 - 134	245203-3	06481	3 - 62
2451710	06481	3 - 111	245203-2	06481	4 - 16	245203-3	06481	3 - 65
2451710	06481	4 - 37	245203-2	06481	4 - 19	245203-3	06481	3 - 78
2451710	06481	4 - 38	245203-2	06481	4 - 23	245203-3	06481	3 - 109
2451710	06481	4 - 36	245203-2	06481	4 - 46	245203-3	06481	4 - 17
2451710	06481	1 - 2	245203-2	06481	4 - 48	245203-3	06481	4 - 24
2451710	06481	2 - 6	245203-2	06481	4 - 53	245203-3	06481	4 - 49
2451710	06481	3 - 1	245203-2	06481	4 - 57	245203-3	06481	4 - 56
2451710	06481	4 - 5	245203-2	06481	4 - 74	245203-3	06481	4 - 78
2451710	06481	2 - 3	245203-2	06481	4 - 75	245203-3	06481	4 - 79
2451710	06481	2 - 4	245203-2	06481	4 - 81	245203-3	06481	4 - 84
2451710	06481	2 - 7	245203-2	06481	4 - 82	245203-3	06481	3 - 52

SECTION V. INDEX - REFERENCE NUMBER CROSS-REFERENCE TO FIGURE AND ITEM NUMBER

REFERENCE NUMBER	MFG CODE	FIGURE & ITEM NO	REFERENCE NUMBER	MFG CODE	FIGURE & ITEM NO	REFERENCE NUMBER	MFG CODE	FIGURE & ITEM NO
245200-2	06481	3 - 81						
715208-7	06481	3 - 106						
715209-7	06481	4 - 15						
715209-7	06481	4 - 50						
715209-7	06481	4 - 51						
715209-7	06481	4 - 52						
715209-7	06481	4 - 54						
715209-7	06481	4 - 55						
715209-7	06481	4 - 58						
715209-2	06481	4 - 59						
715216	06481	3 - 5						
715220	06481	3 - 56						
715220	06481	3 - 85						
715220	06481	3 - 113						
715220	06481	3 - 139						
715220	06481	3 - 140						
715220	06481	3 - 141						
715220	06481	3 - 142						
715220	06481	3 - 143						
715220	06481	3 - 144						
715220	06481	4 - 33						
715220	06481	4 - 99						
715220	06481	4 - 100						
715220	06481	4 - 101						
717947	06481	3 - 25						
718214	06481	4 - 102						
718215	06481	3 - 84						
718216	06481	3 - 55						
718217	06481	3 - 112						
718218	06481	3 - 114						
718261	06481	3 - 115						
718265	06481	4 - 73						
718265	06481	4 - 31						
718266	06481	4 - 98						
674511	06481	4 - 32						
667921-1	87034	4 - 39						
667923-1	06481	1 - 5						
670925-1	06481	1 - 7						
670946-1	06481	1 - 8						
670947-1	06481	1 - 9						
670960-1	06481	1 - 10						
	06481	1 - 6						

SECTION V. INDEX-REFERENCE DESIGNATION CROSS REFERENCE TO INDEX NUMBER

REFERENCE DESIGNATION	INDEX NO	REFERENCE DESIGNATION	INDEX NO	REFERENCE DESIGNATION	INDEX NO
IA1	A494M	IA1A3A7	8359M	W18	A463M
IA141	B150M	IA1A3A8	8373M	W20	A403M
IA1A1A1	B066M	IA1A3A9	C160M	4A1	D495
IA1A1A2	C004A	IA1A3A10	8583M	IA1A1A1	D597
IA1A1A3	B164M	IA1A3A11	B597M	IA1A1A2	D935A
IA1A1A4	C017M	IA1A3A12	8723M	IA1A1A3	E230M
IA1A1A5	B429M	IA1A3A13	B737M	IA1A1A4	E398M
IA1A1A6	C030M	IA1A3A14	B751M	IA1A1A5	E580M
IA1A1A7	C043M	IA1A3A15	B625M	IA1A1A6	E412M
IA1A1A8	B443M	IA1A3A16	B765M	IA1A1A7	E748M
IA1A1A9	C251A	IA1A3A17	B779M	IA1A1A8	E839M
IA1A1A10	B080M	IA1A3A18	B639M	IA1A1A9	E878M
IA1A1A11	B947M	IA1A3A19	B793M	IA1A1A10	E852M
IA1A1A12	C056M	IA1A3A20	B653M	IA1A1A11	E425A
IA1A1A13	B457M	IA1A3A21	B387M	IA1A1A12	E891M
IA1A1A14	C069M	IA1A3A22	C186M	IA1A1A13	E865M
IA1A1A15	C082M	IA1A3A23	B108M	IA1A1A14	E761M
IA1A1A16	B471M	IA1A3A24	B122M	IA1A1A15	E426M
IA1A1A17	B178M	IA1A3A25	C212M	IA1A1A16	E904M
IA1A1A18	B499M	IA1A3A26	C173A	IA1A1A17	E244M
IA1A1A19	B192M	IA1A3A27	C238A	IA1A1A18	E258M
IA1A1A20	B513M	IA1A3A28	C633M	IA1A1A19	E272M
IA1A1A21	B206M	IA1A3A29	C346M	IA1A1A20	E160M
IA1A1A22	C095M	IA1A3A30	B807M	IA1A1A21	E664M
IA1A1A23	B220M	IA1A3A31	B821M	IA1A1A22	E594M
IA1A1A24	C199M	IA1A3A32	B835M	IA1A1A23	E146M
IA1A1A25	A879A	IA1A3A33	B849M	IA1A1A24	E132M
IA1A1A26	A939A	IA1A3A34	B863M	IA1A1A25	E608M
IA1A1A27	C669M	IA1A3A35	B667M	IA1A1A26	E622M
IA1A1A28	C264M	IA1A3A36	B877M	IA1A1A27	E174M
IA1A1A29	A953A	IA1A3A37	B891M	IA1A1A28	E622M
IA1A1A30	B065A	IA1A3A38	B905M	IA1A1A29	E188M
IA1A1A31	B094M	IA1A3A39	B919M	IA1A1A30	E636M
IA1A1A32	B234M	IA1A3A40	B933M	IA1A1A31	E650M
IA1A1A33	A966A	IA1A3A41	B681M	IA1A1A32	F067M
IA1A1A34	A919A	IA1A3A42	B024M	IA1A1A33	E440M
IA1A1A35	A967M	IA1A3A43	B038M	IA1A1A34	E454M
IA1A1A36	A981M	IA1A3A44	B052M	IA1A1A35	E593A
IA1A1A37	A995M	IA1A3A45	B695M	IA1A1A36	E216M
IA1A1A38	B961A	IA1A3A46	B709M	IA1A1A37	E774M
IA1A1A39	B975A	IA1A3A47	B136M	IA1A1A38	E787M
IA1A1A40	B527M	IA1A3A48	A889A	IA1A1A39	E300M
IA1A1A41	B010M	IA1A3A49	A899A	IA1A1A40	E458M
IA1A1A42	B248M	IA1A3A50	A909A	IA1A1A41	E482M
IA1A1A43	B541M	IA1A3A51	C387M	IA1A1A42	E496M
IA1A1A44	B262M	IA1A3A52	C428M	IA1A1A43	E800M
IA1A1A45	B276M	IA1A3A53	C469M	IA1A1A44	E510M
IA1A1A46	B290M	IA1A3A54	C510M	IA1A1A45	E524M
IA1A1A47	B304M	IA1A3A55	C551M	IA1A1A46	E314M
IA1A1A48	B989A	IA1A3A56	C592M	IA1A1A47	D923M
IA1A1A49	C225M	IA1A3A57	D132M	IA1A1A48	E320M
IA1A1A50	B611M	IA1A3A58	D133M	IA1A1A49	E342M
IA1A1A51	C108M	IA1A3A59	D134M	IA1A1A50	E678M
IA1A1A52	B318M	IA1A3A60	D135M	IA1A1A51	E692M
IA1A1A53	B555M	IA1A3A61	D136M	IA1A1A52	E706M
IA1A1A54	A929A	IA1A3A62	D137M	IA1A1A53	E720M
IA1A1A55	E692M	IA1A3A63	D138M	IA1A1A54	E734M
IA1A1A56	C305M	IA1A3A64	D139M	IA1A1A55	F106M
IA1A1A57	C707M	IA1A3A65	D140M	IA1A1A56	E943M
IA1A1A58	C748M	IA1A3A66	D141M	IA1A1A57	E984M
IA1A1A59	C121M	IA1A3A67	D142M	IA1A1A58	F026M
IA1A1A60	B569M	IA1A3A68	D143M	IA1A1A59	E930M
IA1A1A61	B332M	IA1A3A69	D144M	IA1A1A60	E538M
IA1A1A62	C136M	IA1A3A70	D145M	IA1A1A61	E813M
IA1A1A63	B346M	IA1A3A71	D146M	IA1A1A62	E356M
IA1A1A64	C147M	IA1A3A72	D147M	IA1A1A63	E552M
		IA1A3A73	D121M	IA1A1A64	D936M
		IA1A3A74	D131M	IA1A1A65	E370M
		IA1A3A75	D148A	IA1A1A66	E566M
		IA1A3A76	D063M	IA1A1A67	E826M
		IA1A3A77	0073	IA1A1A68	D962M
		IA1A3A78	B4C1M	IA1A1A69	E384M
		IA1A3A79	B415M	IA1A1A70	D975M
		IA1A3A80	A418M	IA1A1A71	
		IA1A3A81	A448M	IA1A1A72	
		IA1A3A82		IA1A1A73	
		IA1A3A83		IA1A1A74	
		IA1A3A84		IA1A1A75	
		IA1A3A85		IA1A1A76	
		IA1A3A86		IA1A1A77	
		IA1A3A87		IA1A1A78	
		IA1A3A88		IA1A1A79	
		IA1A3A89		IA1A1A80	
		IA1A3A90		IA1A1A81	
		IA1A3A91		IA1A1A82	
		IA1A3A92		IA1A1A83	
		IA1A3A93		IA1A1A84	
		IA1A3A94		IA1A1A85	
		IA1A3A95		IA1A1A86	
		IA1A3A96		IA1A1A87	
		IA1A3A97		IA1A1A88	
		IA1A3A98		IA1A1A89	
		IA1A3A99		IA1A1A90	
		IA1A3A100		IA1A1A91	
		IA1A3A101		IA1A1A92	
		IA1A3A102		IA1A1A93	
		IA1A3A103		IA1A1A94	
		IA1A3A104		IA1A1A95	
		IA1A3A105		IA1A1A96	
		IA1A3A106		IA1A1A97	
		IA1A3A107		IA1A1A98	
		IA1A3A108		IA1A1A99	
		IA1A3A109		IA1A1A100	
		IA1A3A110			
		IA1A3A111			
		IA1A3A112			
		IA1A3A113			
		IA1A3A114			
		IA1A3A115			
		IA1A3A116			
		IA1A3A117			
		IA1A3A118			
		IA1A3A119			
		IA1A3A120			
		IA1A3A121			
		IA1A3A122			
		IA1A3A123			
		IA1A3A124			
		IA1A3A125			
		IA1A3A126			
		IA1A3A127			
		IA1A3A128			
		IA1A3A129			
		IA1A3A130			
		IA1A3A131			
		IA1A3A132			
		IA1A3A133			
		IA1A3A134			
		IA1A3A135			
		IA1A3A136			
		IA1A3A137			
		IA1A3A138			
		IA1A3A139			
		IA1A3A140			
		IA1A3A141			
		IA1A3A142			
		IA1A3A143			
		IA1A3A144			
		IA1A3A145			
		IA1A3A146			
		IA1A3A147			
		IA1A3A148			
		IA1A3A149			
		IA1A3A150			
		IA1A3A151			
		IA1A3A152			
		IA1A3A153			
		IA1A3A154			
		IA1A3A155			
		IA1A3A156			
		IA1A3A157			
		IA1A3A158			
		IA1A3A159			
		IA1A3A160			
		IA1A3A161			
		IA1A3A162			
		IA1A3A163			
		IA1A3A164			
		IA1A3A165			
		IA1A3A166			
		IA1A3A167			
		IA1A3A168			
		IA1A3A169			
		IA1A3A170			
		IA1A3A171			
		IA1A3A172			
		IA1A3A173			
		IA1A3A174			
		IA1A3A175			
		IA1A3A176			
		IA1A3A177			
		IA1A3A178			
		IA1A3A179			
		IA1A3A180			
		IA1A3A181			
		IA1A3A182			
		IA1A3A183			
		IA1A3A184			
		IA1A3A185			
		IA1A3A186			
		IA1A3A187			
		IA1A3A188			
		IA1A3A189			
		IA1A3A190			
		IA1A3A191			
		IA1A3A192			
		IA1A3A193			
		IA1A3A194			
		IA1A3A195			
		IA1A3A196			
		IA1A3A197			
		IA1A3A198			
		IA1A3A199			
		IA1A3A200			

SECTION V. INDEX-REFERENCE DESIGNATION CROSS REFERENCE TO INDEX NUMBER (CONTINUED)

REFERENCE DESIGNATION	INDEX NO	REFERENCE DESIGNATION	INDEX NO	REFERENCE DESIGNATION	INDEX NO
2A1A3A14	D968M				
2A1A3A15	E001A				
2A1A3A15	E202A				
2A1A3A22	F141M				
2A1A3A23	F176M				
2A1A3A25	F066A				
2A1A3A26	E086M				
2A1A3A28	E066M				
2A1A3A28	E048M				
2A1A3A29	E002M				
2A1A3A30	E025M				
2A1DS1	F453A				
2A1DS2	F454A				
2A1DS3	F455A				
2A1DS4	F456A				
2A1DS5	F457A				
2A1DS6	F458A				
2A1DS7	F459A				
2A1DS8	F460A				
2A1DS9	F461A				
2A1MP12	D654M				
2A1MP28	F452M				
2A1MP30	F467				
2A1MP31	F468A				
2A1PS1	F525M				
2W1	D496M				
2W2	O511M				
2W3	O571				
2W6	O529				
2W7	O544				
3	A002				
3W4	A146M				
3W8	A194M				
3W9	A209M				
3W10	A225M				
3W11	A293M				
3W12	A241M				
3W13	A259M				
3W14	A277M				
3W16	A309A				
3W19	A163M				
3W21	A179M				

SECTION V. INDEX - FEDERAL STOCK NUMBER CROSS-REFERENCE TO FIGURE AND ITEM NUMBER

STOCK NUMBER	FIGURE & ITEM NO	STOCK NUMBER	FIGURE & ITEM NO	STOCK NUMBER	FIGURE & ITEM NO
5355-751-7597	4 - 7	6625	3 - 59	6625	3 -134
5355-839-9148	3 - 18	6625	3 - 60	6625	3 -134
5355-917-1012	3 - 26	6625	3 - 61	6625	3 -135
5930-997-7974	3 - 21	6625	3 - 62	6625	3 -136
5930-997-7974	4 - 14	6625	3 - 63	6625	3 -137
6095	4 - 2	6625	3 - 64	6625	3 -138
6210	3 - 22	6625	3 - 65	6625	3 -139
6210	4 - 8	6625	3 - 66	6625	3 -140
6210	4 - 39	6625	3 - 67	6625	3 -141
6240-132-4011	3 - 6	6625	3 - 68	6625	3 -142
6240-132-4011	3 - 7	6625	3 - 69	6625	3 -143
6240-132-4011	3 - 8	6625	3 - 70	6625	3 -144
6240-132-4011	3 - 9	6625	3 - 71	6625	4 - 6
6240-132-4011	3 - 10	6625	3 - 72	6625	4 - 15
6240-132-4011	3 - 11	6625	3 - 73	6625	4 - 16
6240-132-4011	3 - 12	6625	3 - 74	6625	4 - 17
6240-132-4011	3 - 13	6625	3 - 75	6625	4 - 18
6240-132-4011	3 - 14	6625	3 - 76	6625	4 - 19
6240-132-4011	3 - 15	6625	3 - 77	6625	4 - 20
6240-132-4011	3 - 16	6625	3 - 78	6625	4 - 21
6240-132-4011	3 - 17	6625	3 - 79	6625	4 - 22
6240-132-4011	3 - 19	6625	3 - 80	6625	4 - 23
6240-132-4011	3 - 20	6625	3 - 81	6625	4 - 24
6240-132-4011	3 - 23	6625	3 - 82	6625	4 - 25
6240-132-4011	3 - 24	6625	3 - 83	6625	4 - 26
6240-132-4011	4 - 9	6625	3 - 84	6625	4 - 27
6240-132-4011	4 - 10	6625	3 - 85	6625	4 - 28
6240-132-4011	4 - 11	6625	3 - 86	6625	4 - 29
6240-132-4011	4 - 12	6625	3 - 87	6625	4 - 30
6240-132-4011	4 - 13	6625	3 - 88	6625	4 - 31
6240-132-4011	4 - 40	6625	3 - 89	6625	4 - 32
6240-132-4011	4 - 41	6625	3 - 90	6625	4 - 33
6240-132-4011	4 - 42	6625	3 - 91	6625	4 - 34
6240-132-4011	4 - 43	6625	3 - 92	6625	4 - 35
6615-245-8476	2 - 7	6625	3 - 93	6625	4 - 36
6625	1 - 5	6625	3 - 94	6625	4 - 37
6625	1 - 6	6625	3 - 95	6625	4 - 38
6625	1 - 7	6625	3 - 96	6625	4 - 44
6625	1 - 8	6625	3 - 97	6625	4 - 45
6625	1 - 9	6625	3 - 98	6625	4 - 46
6625	1 - 10	6625	3 - 99	6625	4 - 47
6625	3 - 5	6625	3 -100	6625	4 - 48
6625	3 - 25	6625	3 -101	6625	4 - 49
6625	3 - 27	6625	3 -102	6625	4 - 50
6625	3 - 28	6625	3 -103	6625	4 - 51
6625	3 - 29	6625	3 -104	6625	4 - 52
6625	3 - 30	6625	3 -105	6625	4 - 53
6625	3 - 31	6625	3 -106	6625	4 - 54
6625	3 - 32	6625	3 -107	6625	4 - 55
6625	3 - 33	6625	3 -108	6625	4 - 56
6625	3 - 34	6625	3 -109	6625	4 - 57
6625	3 - 35	6625	3 -110	6625	4 - 58
6625	3 - 36	6625	3 -111	6625	4 - 59
6625	3 - 37	6625	3 -112	6625	4 - 60
6625	3 - 38	6625	3 -113	6625	4 - 61
6625	3 - 39	6625	3 -114	6625	4 - 62
6625	3 - 40	6625	3 -115	6625	4 - 63
6625	3 - 41	6625	3 -116	6625	4 - 64
6625	3 - 42	6625	3 -117	6625	4 - 65
6625	3 - 43	6625	3 -118	6625	4 - 66
6625	3 - 44	6625	3 -119	6625	4 - 67
6625	3 - 45	6625	3 -120	6625	4 - 68
6625	3 - 46	6625	3 -121	6625	4 - 69
6625	3 - 47	6625	3 -122	6625	4 - 70
6625	3 - 48	6625	3 -123	6625	4 - 71
6625	3 - 49	6625	3 -124	6625	4 - 72
6625	3 - 50	6625	3 -125	6625	4 - 73
6625	3 - 51	6625	3 -126	6625	4 - 74
6625	3 - 52	6625	3 -127	6625	4 - 75
6625	3 - 53	6625	3 -128	6625	4 - 76
6625	3 - 54	6625	3 -129	6625	4 - 77
6625	3 - 55	6625	3 -130	6625	4 - 78
6625	3 - 56	6625	3 -131	6625	4 - 79
6625	3 - 57	6625	3 -132	6625	4 - 80
6625	3 - 58	6625	3 -133	6625	4 - 81



SECTION V. INDEX - FEDERAL STOCK NUMBER CROSS-REFERENCE TO FIGURE AND ITEM NUMBER

STOCK NUMBER	FIGURE & ITEM NO	STOCK NUMBER	FIGURE & ITEM NO	STOCK NUMBER	FIGURE & ITEM NO
6625	4 - 82				
6625	4 - 83				
6625	4 - 84				
6625	4 - 85				
6625	4 - 86				
6625	4 - 87				
6625	4 - 88				
6625	4 - 89				
6625	4 - 90				
6625	4 - 91				
6625	4 - 92				
6625	4 - 93				
6625	4 - 94				
6625	4 - 95				
6625	4 - 96				
6625	4 - 97				
6625	4 - 98				
6625	4 - 99				
6625	4 -100				
6625	4 -101				
6625	4 -102				
6625-234-6115	2 - 2				
6625-234-6116	1 - 2				
6625-234-6146	1 - 4				
6625-234-6147	1 - 3				
6625-245-1735	4 - 3				
6625-245-1737	4 - 4				
6625-245-1738	3 - 1				
6625-245-1739	4 - 1				
6625-245-1740	4 - 5				
6625-245-1741	3 - 4				
6625-245-1746	2 - 6				
6625-245-1747	2 - 9				
6625-245-1748	3 - 3				
6625-245-1750	2 - 4				
6625-245-8473	2 - 11				
6625-245-8474	2 - 5				
6625-245-8475	2 - 3				
6625-245-8477	2 - 8				
6625-401-3280	1 - 1				
6625-410-9912	3 - 2				
6625-410-9913	2 - 1				
6625-411-5837	2 - 10				

SECTION V. INDEX-FIGURE AND ITEM NUMBER CROSS REFERENCE TO INDEX NUMBER

FIG NO	ITEM NO OR REFERENCE DESIGNATION	INDEX NO	FIG NO	ITEM NO OR REFERENCE DESIGNATION	INDEX NO
1	1	A001	3	55	C669M
1	1	A002	3	56	C264M
1	1	A402M	3	57	C121M
1	1	D495	3	58	B569M
1	1	G081A1	3	59	B332M
1	1	G081C8	3	60	C134M
1	1	G081A6	3	61	B346M
1	1	G081B2	3	62	C147M
1	1	GC81B7	3	63	B359M
1	1	G081C3	3	64	B373
2	2	A309A	3	65	C160M
2	2	A146M	3	66	C583M
2	2	A179M	3	67	C597M
2	2	A194M	3	68	B723M
2	2	A277M	3	69	B737M
2	2	A163M	3	70	B 51M
2	2	A209M	3	71	B625M
2	2	A225M	3	72	B765M
2	2	A293M	3	73	B779M
2	2	A241M	3	74	B639M
2	2	A259M	3	75	B 93M
3	3	A403M	3	76	B553M
3	3	A418M	3	77	F387M
3	3	A448M	3	78	-186M
3	3	A463M	3	79	B108M
3	3	A494M	3	80	B122M
3	3	D132M	3	81	C212M
3	3	D133M	3	82	C173A
3	3	D134M	3	83	C238A
3	3	D135M	3	84	C638M
3	3	D136M	3	85	C346M
3	3	D137M	3	86	A953A
3	3	D138M	3	87	B065A
3	3	D139M	3	88	B094M
3	3	D140M	3	89	B234M
3	3	D141M	3	90	A966A
3	3	D142M	3	91	A919A
3	3	D143M	3	92	A967M
3	3	D131M	3	93	A981M
3	3	D144M	3	94	A995M
3	3	D145M	3	95	B961A
3	3	D121M	3	96	B975A
3	3	D148A	3	97	B527M
3	3	D146M	3	98	B010M
3	3	D147M	3	99	B248M
3	3	D063M	3	100	B541M
3	3	D073	3	101	B262M
3	3	B150M	3	102	B276M
3	3	B066M	3	103	B290M
3	3	C004A	3	104	B304M
3	3	B164M	3	105	B989A
3	3	C017M	3	106	C225M
3	3	B429M	3	107	B611M
3	3	C030M	3	108	C108M
3	3	C043M	3	109	B318M
3	3	B443M	3	110	B555M
3	3	C251A	3	111	A929A
3	3	B080M	3	112	C692M
3	3	B947M	3	113	C305M
3	3	C056M	3	114	C707M
3	3	B457M	3	115	C748M
3	3	C069M	3	116	B807M
3	3	C082M	3	117	B821M
3	3	B471M	3	118	B835M
3	3	B178M	3	119	B849M
3	3	B485M	3	120	B863M
3	3	B499M	3	121	B667M
3	3	B192M	3	122	B677M
3	3	B513M	3	123	B891M
3	3	B206M	3	124	B905M
3	3	C095M	3	125	B919M
3	3	B220M	3	126	B933M
3	3	C199M	3	127	B681M
3	3	A879A	3	128	B024M
3	3	A939A	3	129	B038M

SECTION V. INDEX-FIGURE AND ITEM NUMBER CROSS REFERENCE TO INDEX NUMBER (CONTINUED)

FIG NO	ITEM NO OR REFERENCE DESIGNATION	INDEX NO	FIG NO	ITEM NO OR REFERENCE DESIGNATION	INDEX NO
3	330	8052M	4	61	E258M
3	331	8695M	4	62	E272M
3	332	8401M	4	63	E664M
3	333	8709M	4	64	E594M
3	334	8415M	4	65	E146M
3	335	8136M	4	66	E132M
3	336	A889A	4	67	E608M
3	337	A899A	4	68	E622M
3	338	A909A	4	69	E174M
3	339	C387M	4	70	E188M
3	340	C428M	4	71	E636M
3	341	C469M	4	72	E650M
3	342	C510M	4	73	F067M
3	343	C551M	4	74	E440M
3	344	C592M	4	75	E454M
4	345	D496M	4	76	E593A
4	346	D511M	4	77	E216M
4	347	D529	4	78	F774M
4	348	D544	4	79	E787M
4	349	D571	4	80	E300M
4	350	D597	4	81	E468M
4	351	F452M	4	82	E482M
4	352	F468A	4	83	E496M
4	353	F453A	4	84	E800M
4	354	F454A	4	85	E510M
4	355	F455A	4	86	E524M
4	356	F456A	4	87	E314M
4	357	F457A	4	88	D923M
4	358	D654M	4	89	E328M
4	359	E930M	4	90	E342M
4	360	E538M	4	91	E160M
4	361	E813M	4	92	E678M
4	362	E356M	4	93	E692M
4	363	E552M	4	94	E706M
4	364	D936M	4	95	E720M
4	365	E370M	4	96	E744M
4	366	D949M	4	97	E286M
4	367	E566M	4	98	F106M
4	368	E826M	4	99	E943M
4	369	D962M	4	100	E984M
4	370	E384M	4	101	F026M
4	371	D975M	4	102	F525M
4	372	D988M			
4	373	E001A			
4	374	E202A			
4	375	F141M			
4	376	F176M			
4	377	F066A			
4	378	E086M			
4	379	E066M			
4	380	E048M			
4	381	E002M			
4	382	F467			
4	383	F458A			
4	384	F459A			
4	385	F460A			
4	386	F461A			
4	387	D935A			
4	388	E230M			
4	389	E398M			
4	390	E580M			
4	391	E412M			
4	392	E748M			
4	393	E839M			
4	394	E878M			
4	395	E852M			
4	396	E425A			
4	397	E891M			
4	398	E865M			
4	399	E761M			
4	400	E426M			
4	401	E917M			
4	402	E904M			
4	403	E244M			

**By Order of the Secretary of the Army:**

*Official:*

**VERNE L. BOWERS,**  
*Major General, United States Army,*  
*The Adjutant General.*

**W. C. WESTMORELAND,**  
*General, United States Army,*  
*Chief of Staff.*

**Distribution:**

To be distributed in accordance with DA Form 12-31, Direct and General Support maintenance requirements for OV-1D and U-21 aircrafts.

**END**

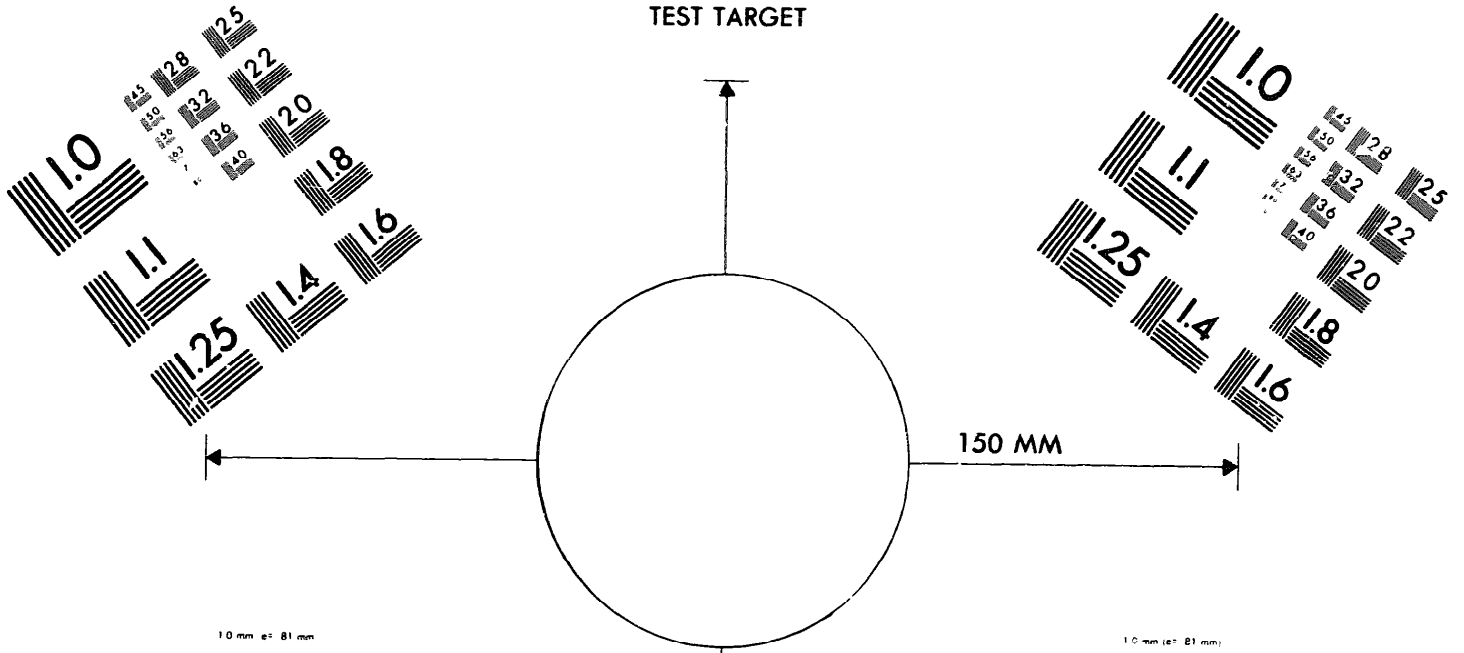
8-1-83

**DATE**





DEPARTMENT OF THE ARMY  
MICROFORM  
TEST TARGET



10 mm (e= 81 mm)

ABCDEFGHIJKLMNQRSTUUVWXYZ1234567890  
abcdefghijklmnopqrstuvwxyz\$%&'()\*+,-./:;<=>@

15 mm (e= 109 mm)

ABCDEFGHIJKLMNQRSTUUVWXYZ1234567890  
abcdefghijklmnopqrstuvwxyz\$%&'()\*+,-./:;<=>@

20 mm (e= 137 mm)

ABCDEFGHIJKLMNQRSTUUVWXYZ  
abcdefghijklmnopqrstuvwxyz  
1234567890\$c£/%# 1/2 1/4 3/4 —=+ x&@\*

25 mm (e= 177 mm)

ABCDEFGHIJKLMNQRSTUUVWXYZ  
abcdefghijklmnopqrstuvwxyz  
1234567890\$c£/%# 1/2 1/4 3/4 —=+ x&@\*

10 mm (e= 81 mm)

ABCDEFGHIJKLMNQRSTUUVWXYZ1234567890  
abcdefghijklmnopqrstuvwxyz\$%&'()\*+,-./:;<=>@

15 mm (e= 109 mm)

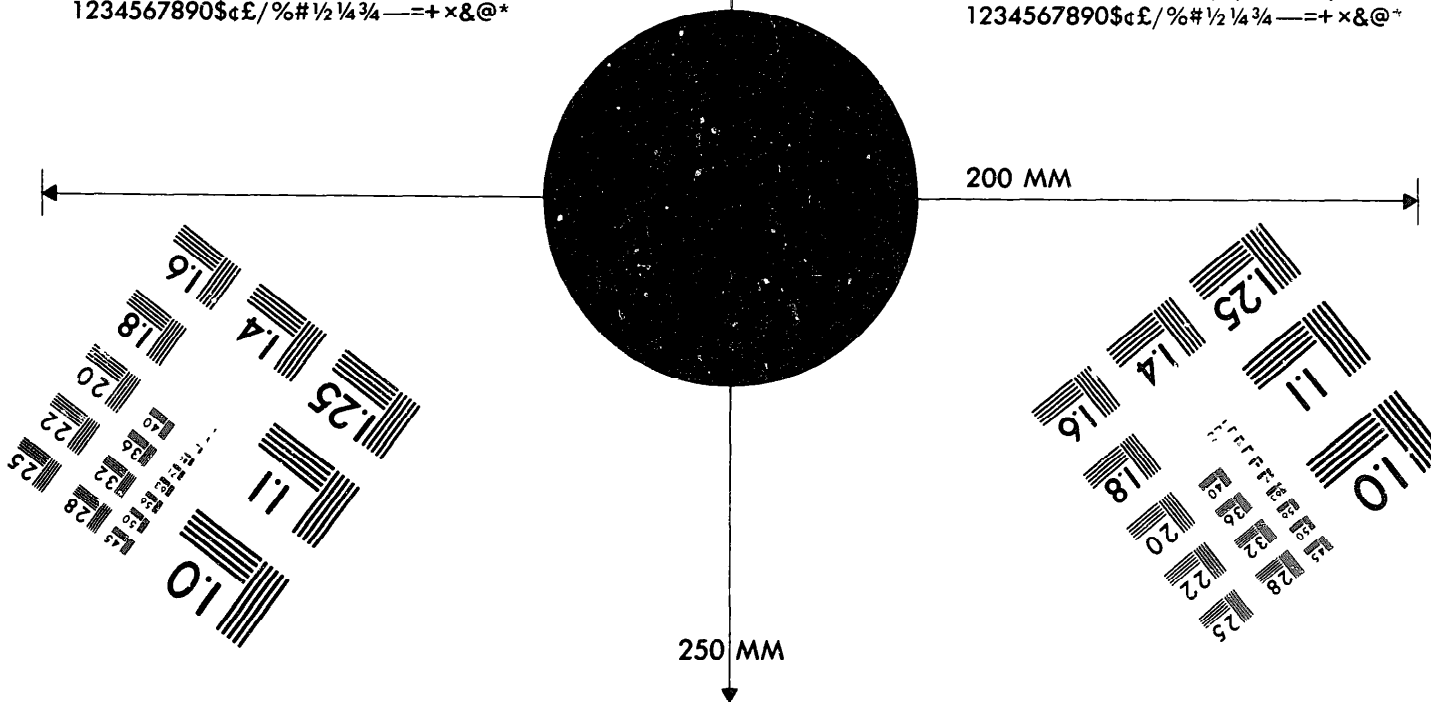
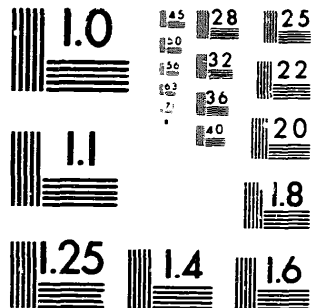
ABCDEFGHIJKLMNQRSTUUVWXYZ1234567890  
abcdefghijklmnopqrstuvwxyz\$%&'()\*+,-./:;<=>@

20 mm (e= 137 mm)

ABCDEFGHIJKLMNQRSTUUVWXYZ  
abcdefghijklmnopqrstuvwxyz  
1234567890\$c£/%# 1/2 1/4 3/4 —=+ x&@\*

25 mm (e= 177 mm)

ABCDEFGHIJKLMNQRSTUUVWXYZ  
abcdefghijklmnopqrstuvwxyz  
1234567890\$c£/%# 1/2 1/4 3/4 —=+ x&@\*



200 MM

250 MM